



English User Manual

Copyright © (1990-2022) SW-Tools ApS
Duevej 23
DK-2680 Solrød Strand
Denmark
Phone: +45) 33 33 05 56
Mail: swtools@swtools.com
www: www.swtools.com

NET-TRIO

22/11/01 / 2022-09-01 008.384

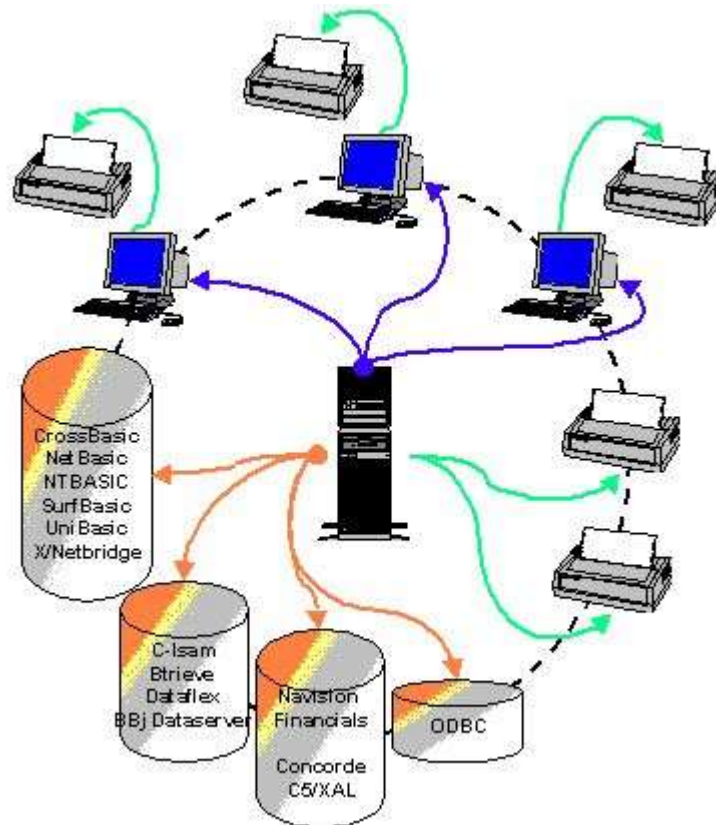
Contents

Contents	2
1. Preface.....	4
1.1. NET-TRIO	5
1.2. NET-RG report / CGI generator.....	6
1.2.1. NET-PA Printer Administration.....	7
1.2.2. Program menus	8
1.3. NET-IQ Intelligent Query.....	9
1.3.1. NET-PS Plugin Service for NET-IQ	10
1.4. NET-DM DATAMASTER file maintenance programs	11
1.5. NET-US User Administration	12
1.5.1. Security	13
1.6. Licensing	14
1.7. Hardware and Intranet/Internet web servers	15
2. Installation	16
2.1. CD or Download before installation.....	17
2.2. Installation.....	18
2.3. SW-Tools License.....	23
2.3.1. Windows TRIO license on the server	24
2.3.2. Too many concurrent users	25
2.4. NET-UA User Administration	26
2.4.1. Add user with link to existing TRIO installation.....	27
2.5. NET-NP Preferences	28
2.5.1. Server name	29
2.5.2. Service port number.....	30
2.5.3. Virtual main directory	31
2.5.4. Virtual executable directory	32
2.5.5. Virtual public file directory.....	33
2.5.6. Virtual temporary file directory	34
2.5.7. Real executable directory	35
2.5.8. Real public file directory.....	36
2.5.9. Real temporary file directory	37
2.6. NET-TRIO and Microsoft Personal Webserver (PWS)	38
2.7. NET-TRIO and Microsoft Internet Information Server (IIS)	42
2.8. NET-TRIO and other HTTP servers.....	46
2.9. Standard startup page in HTML format	47
3. NET-RG Report Generator	48
3.1. System reports.....	49
3.1.1. Subsystem Selector.....	50
3.1.2. Report Selector.....	51
3.1.3. Report Start	52
3.1.4. Your own report start page.....	53
3.1.4.1. Sample HTML form	54
3.1.4.2. Retrieve form field value	55
3.2. Direct start of report	56
3.3. NET-PA Printer Administration	58
3.3.1. Standard printers	59
3.3.2. Printer group field	60
4. NET-IQ Intelligent Queries	61
4.1. NET-PS Plugin Service	62
4.1.1. Error codes.....	63
4.2. Download of the NET-IQ Plugin.....	64
4.3. NET-IQ Plugin.....	65

4.4. System reports	66
4.4.1. Subsystem Selector	67
4.4.2. Program Selector	68
4.4.3. Program Start	69
4.4.3.1. Syntax in DM1962.HTM	70
4.5. Direct start of program	72
4.6. Functionality	75
4.6.1. IQ menus	76
5. NET-DM DATAMASTER	77
6. Standard HTML, picture, JAVASCRIPT and system files	78
6.1. Standard public files	79
6.2. JAVASCRIPT files	80
6.2.1. SWNET.JS generated file	81
6.3. Pictures, logo, static HTML pages	82
7. Temporary files	83
8. Requirements	84
8.1. Supported Web Servers	85
8.2. Supported browsers	86
8.3. Firewall	87
8.4. Router	88
9. Subfunctions	89
9.1. <u>CGI PAR</u> - Get CGI parameter	90
9.2. <u>CGI WEBNAME</u> - Get CGI parameter	91
9.3. <u>EXREP</u> - External report file handling for HTML generation	92
9.4. <u>ssv repla</u> - Replacements in textstring	94
9.5. <u>ssv use</u> - Get user permissions	95
9.6. <u>SUBSYS</u> - Change current subsystem (RAP)	96
9.7. <u>CHAIN</u> - Execute URL in a new window (IQ)	97
10. Windows Server 2008, IIS 7 and Windows 7 installation	98
10.1. <u>IIS</u> installation	99
Figure list	109
Index	110

1. Preface

SW-Tools NET-TRIO provides you with server driven applications to execute any report, query or data entry program designed with SW-Tools TRIO.



1. NET-TRIO environment

1.1. NET-TRIO

NET-TRIO enables you to run any of your existing TRIO programs from a browser without any modifications at all.

NET-TRIO does not enable you to produce or amend any program from the browser, for this you will need the normal Windows TRIO. Programs may be used in any way but not modified.

The documentation for TRIO RAPGEN, IQ, DATAMASTER and User Administrations describes in details how to make TRIO programs, in this manual you will find informations on how to get these working with your intranet/internet solution.

Working with HTML, JAVA-Scripts however still requires knowledge of these languages, NET-TRIO does not design your website but will act as an integrated part of this, making your data available in any form you wish.

1.2. NET-RG report / CGI generator

TRIO RAPGEN is able to produce print output in HTML or GIF form fittet for browser output, as NET-RG also PDF print for ADOBE Acrobat reader is supported together with a very powerfull way of generating HTML pages, not only as print output, but also as respond to any CGI-call enabling you to easily write and modify your one CGI scripts.
No plugins will be needed on the client side to use NET-RG.

1.2.1. NET-PA Printer Administration

A browser solution will require different printer setup than a Windows application, NET-PA enables you to setup these printers on the server for output to network printers or HTML/PDF files.

1.2.2. Program menus

The menus for TRIO program selections in NET-TRIO are made as such reports producing HTML output, and you will even be able to tailor these for your own use as described later. You may also choose to place the programs directly on your website and leave the automated menus completely out.

1.3. NET-IQ Intelligent Query

Any query produced by TRIO IQ may now be integrated directly to your website. When the client uses an IQ program from the browser, this program will actually be running on the web-server and just input/output data are transported between the client and the server.

For the time being, the DIALOG function of IQ is not supported, however this will be implemented shortly.

1.3.1. NET-PS Plugin Service for NET-IQ

To maintain the communication between the client and the server IQ program, a plugin must be installed at the client browser and the NET-PS program running on the webserver.

1.4. NET-DM DATAMASTER file maintenance programs

Running DATAMASTER programs from the browser enables you to not only query, but also modify existing data or create new.

1.5. NET-US User Administration

The User Administration gives you the possibility to run different set of TRIO programs on the webserver.

1.5.1. Security

NET-TRIO itself does not implement any security systems, this must be maintained by your webserver and website design defining password input and which programs are accessible for the user.

1.6. Licensing

NET-TRIO is licensed as concurrent users on the server site, no individual client license will be needed. To make/modify programs you will need a normal TRIO license.

1.7. Hardware and Intranet/Internet webservers

NET-TRIO will require a Windows server of any kind (95/98/ME/2000/NT), running on a UNIX server is not possible.

You must have the possibility to run own CGI-applications on the server, note that this is not allowed on many public domain servers.

Your own in-house server will be the normal solution, as your data also should be accessible with the NET-TRIO programs.

Dependent on how much output you will keep on the server, you should not underestimate the amount of space needed for the tmp files.

2. Installation

This installation guide will step-by-step describe how to install and setup the NET-TRIO system. It is important that you setup the correct information before any client can access the system.

2.1. CD or Download before installation

If you do not have the SW-Tools product CD please contact one of our partners. The CD will contain all files required to install SW-Tools NET-TRIO.

If you want to download the product you must have a user name and password in order to login to our web site

<http://www.swtools.com>

From this site you may download by selecting menu

Download - 32-Bit

The following files must be downloaded from the SW-Tools Web site:

- **SWXXX0YY.EXE (Installation Program)**

- **XXX3YY06.ZZZ (NET-TRIO)**

where XXX is the major version number, YY is the minor version number and ZZZ is the language code.

If NET-TRIO is to handle a filesystem such as BBJ Dataserver (XXX3YY68.ZZZ) or Open Basic Write (XXX3YY67.ZZZ) or others it is required to download the additional product installation files.

All files must be placed in the same directory before installation can be made.

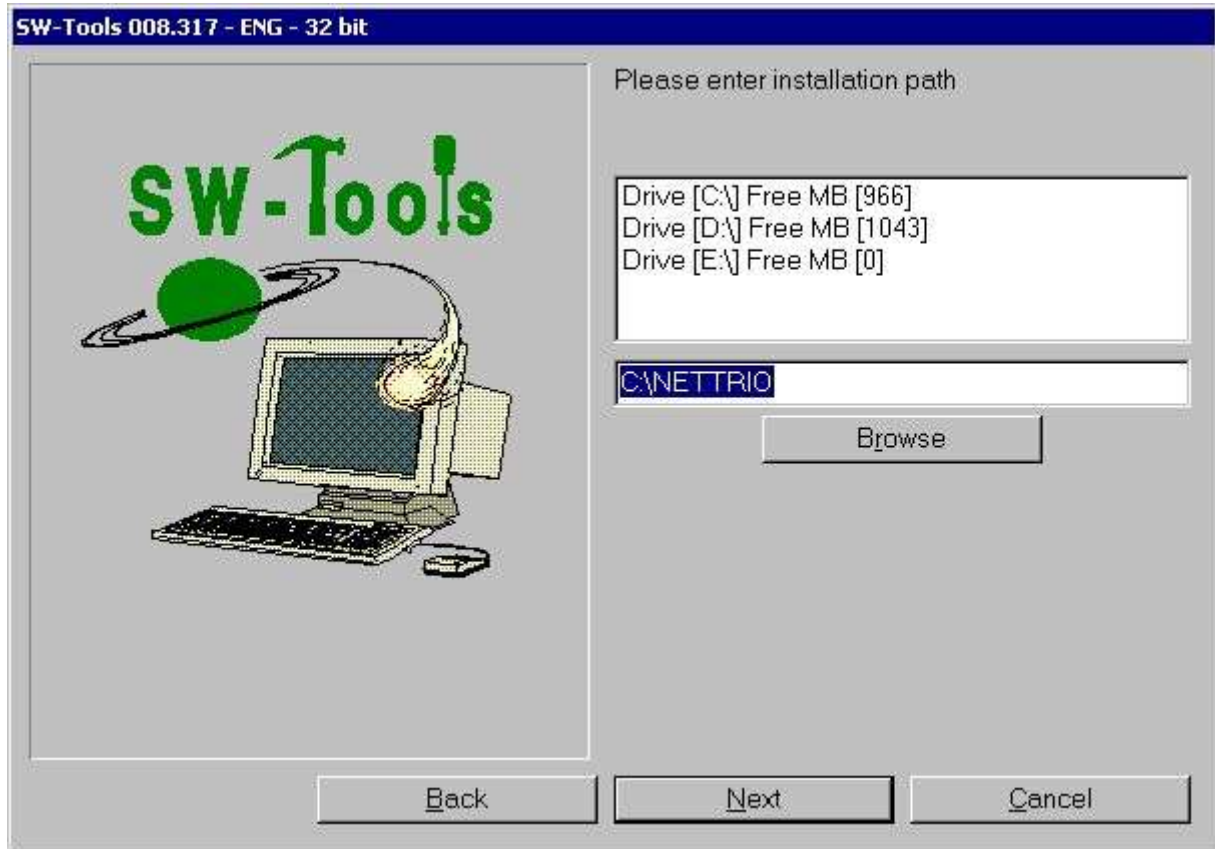
2.2. Installation

Start the installation program **SWXXXOYY.EXE** and make sure to select the product NET-TRIO.



2. Product selection

The installation path is by default set to **C:\NETTRIO** by may be changed. It is advised not to be the path of an existing TRIO installation.



3. Installation path

The program group is by default set to **SW-Tools NET-TRIO** by may be changed.



4. Program group

Once products have been selected, installation path and program group the installation program will display a summary of what have been selected and inform that the installation is logged in a specific file. Start the installation by selecting **Install**.



5. Summary of installation

Once installation is finished NET-TRIO will automatically setup the User Administration and create two users named:

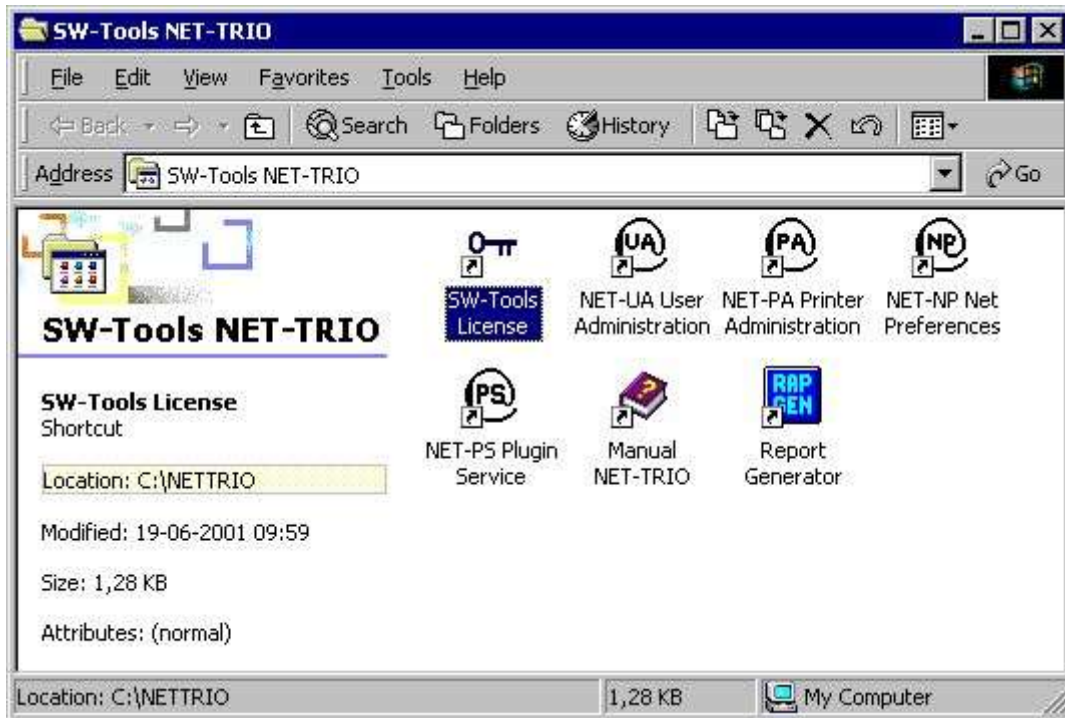
- **Super**
- **User**

User **Super** is intended as administrator for the NET-TRIO user administration and preferences. Therefore the installation will ask for a password which may be left blank (NOT recommended).



6. Super user password

Now the installation is finished and once **OK** have been selected the program group will be created.



7. Minimal program group content

In order for the installation to work it is now time to:

- **Install SW-Tools license**
- **Setup Preferences**

2.3. SW-Tools License

The license is only required on the server where NET-TRIO is installed. Any client that access NET-TRIO will NOT require a separate license, however NET-TRIO will check the number of concurrent users running according to the server license. If too many users access NET-TRIO an error will be returned to the client side.

It is necessary to have product **0114** in order to run NET-TRIO.

Please refer to the *SW-Tools License manual* for more information on how to install a license.

Product	Usage	Date	Until	Activation key	Users		
0109	TRIO 32 Bit	2	Full	010617	011231	AAAAAA	3
0105	ODBC 32 Bit	R	Readonly	010617	011231	BBBBBB	3
0111	USER Administration	2	Full	010617	011231	CCCCCC	3
0114	NET-TRIO	N	Net	010617	011231	DDDDDD	50

8. Sample NET-TRIO license

2.3.1. Windows TRIO license on the server

You may use Windows TRIO directly on the server only with the NET-TRIO license, each TRIO program will count as one NET-TRIO concurrent user.

However usually the TRIO programs will be defined from a local client as developing directly on the server should be omitted.

2.3.2. Too many concurrent users

When the actual concurrent users allowed are exceeded, the HTML page

c:\nettrio\netusers.eng

will be returned instead of the normal report output (.ENG being the language).

You may modify this page according to your needs.

IQ will not use this file to report the error, but rather display the text set in the file **swnet.txt** located in the NET-TRIO directory named

SWNT_eng_liciqerr="Sorry but NET-IQ is busy - Please try again later"

2.4. NET-UA User Administration

The user administration is as mentioned earlier setup the first time NET-TRIO is installed. It will have no effect on any current SW-Tools TRIO installation.

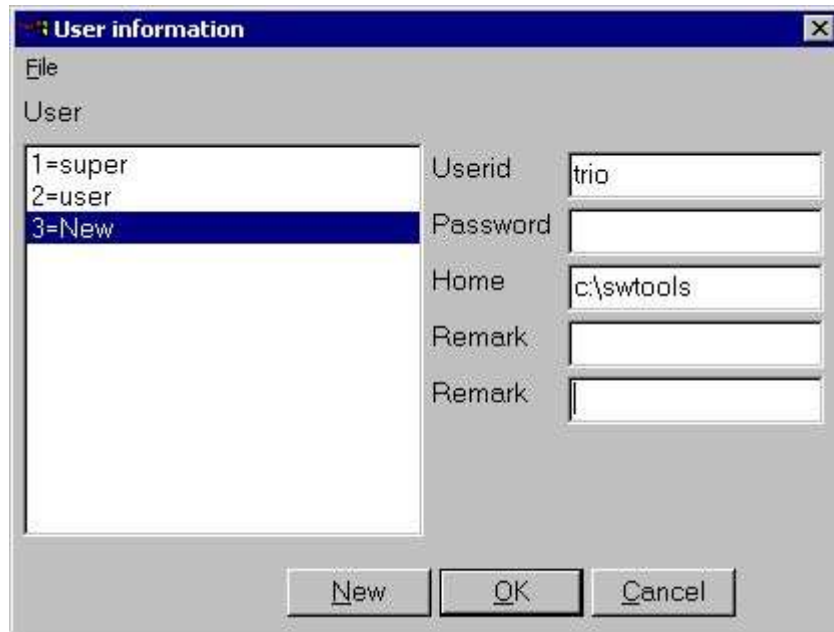
The normal start screen of the user administration contains a button to setup the user administration. It is not necessary to select this function because the installation of NET-TRIO have automatically setup this to point to the installation path selected (e.g. **C:\NETTRIO**).

Please refer to the *SW-Tools User Administration manual* for more information on how to use this module.

2.4.1. Add user with link to existing TRIO installation

It is possible to link to an existing TRIO installation simply by creating a user that points to the location of the TRIO installation.

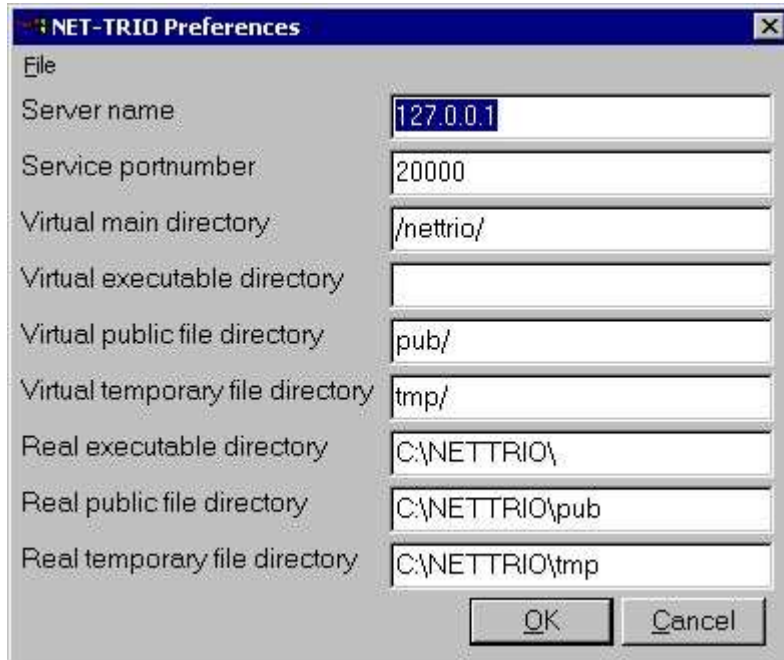
For example, if TRIO is installed on the same server as NET-TRIO but in directory **C:\SWTOOLS** you may setup a user named **TRIO** as shown here.



9. User linked to existing TRIO installation

2.5. NET-NP Preferences

The setup of NET-TRIO contain all the information required to produce real URL addresses and report output at specific locations on the system. The entire NET-TRIO system depend on these settings.



10. Standard preference

2.5.1. Server name

Name of the NET-TRIO server. This is normally the host name for the server machine. It is used when NET-TRIO needs to generate an URL, e.g.

http://www.swtools.com/...

where **www.swtools.com** is the server name. The field may also be an IP address, e.g. **127.0.0.1** will equal an URL

http://127.0.0.1/...

2.5.2. Service portnumber

This field is used by the NET-PS Plugin Service application. It is important only to the SW-Tools plugins which need to access this service. All SW-Tools plugins must know this port number. By default installation it is set to **20000**.

2.5.3. Virtual main directory

The virtual main directory may be a part of the complete URL address for your site. If NET-TRIO is to run on the following address

http://myserver/nettrio/...

the field **Server name** is **myserver** and this field is **/nettrio/**.

For example, if you use NET-TRIO in connection with Microsoft Personal Webserver you may setup various virtual directories. Each virtual directory is a subcomponent to the home. This field must equal one of the top-level virtual directory aliases or be left blank.

Important: When NET-TRIO uses this field in connection with the other Virtual directory fields below it is important to know how they are concatenated. For example, whenever NET-TRIO needs to generate dynamic HTML pages with reference to a public JAVASCRIPT file (located in the public directory) it uses the following syntax:

<SCRIPT LANGUAGE"Javascript" SRC="#68#69_swnet.js"></SCRIPT>

which is then translated into

<SCRIPT LANGUAGE"Javascript" SRC="/nettrio/pub/swnet.js"></SCRIPT>

2.5.4. Virtual executable directory

This field should normally be left blank. However, if the NET-TRIO executables is moved to another directory then the one equal to the Virtual main directory it must be entered.

For example, if the report executable (**RAP00132.EXE**) is to be located in a virtual directory named **cgi-bin** so that the URL is

http://myserver/nettrio/cgi-bin/rap00132.exe

the field must be entered as

cgi-bin/

or if the Virtual directory is a root directory

http://myserver/cgi-bin/rap00132.exe

the field must be entered as

/cgi-bin/

2.5.5. Virtual public file directory

The public files are files such as JAVASCRIPT files (.js), static HTML pages, pictures (.gif/.jpg) etc. The public files required by NET-TRIO is installed as a subdirectory to the NET-TRIO installation directory, e.g.

c:\nettrio\pub

Therefore the normal procedure is to define a virtual directory named

pub/

as a subdirectory to the Virtual main directory. This will result in an URL

http://myserver/nettrio/pub/...

2.5.6. Virtual temporary file directory

This virtual directory is used when NET-TRIO produces report output. All temporary files will be stored in this virtual directory. All output will be separated according to the user given by start of the report so that only this user will be able to retrieve output from previous printout.

The temporary directory required by NET-TRIO is installed as a subdirectory to the NET-TRIO installation directory, e.g.

c:\nettrio\tmp

Therefore the normal procedure is to define a virtual directory named

tmp/

as a subdirectory to the Virtual main directory. This will result in an URL

http://myserver/nettrio/tmp/...

2.5.7. Real executable directory

The real executable directory is used to transform an HREF like

/nettrio/cgi-bin/rap00132.exe

into the real local placement of the application, e.g.

c:\nettrio\rap00132.exe

if this field is set to **c:\nettrio**.

2.5.8. Real public file directory

The real public file directory is used to transform an HREF like

/nettrio/pub/swnet.js

into the real local placement of the file, e.g.

c:\nettrio\pub\swnet.js

if this field is set to **c:\nettrio\pub**.

2.5.9. Real temporary file directory

The real temporary file directory is used to transform an HREF like

/nettrio/tmp/user/00100001.htm

into the real local placement of the file, e.g.

c:\nettrio\tmp\user\00100001.htm

if this field is set to **c:\nettrio\tmp**.

2.6. NET-TRIO and Microsoft Personal Webserver (PWS)

This section shows exactly what has been setup in PWS in order for NET-TRIO to work. In PWS Manager under Advanced Options you may setup virtual directories as part of the <Home> directory.



11. PWS - Adding NETTRIO virtual directory

When this is created virtual **pub** and **tmp** may be added.

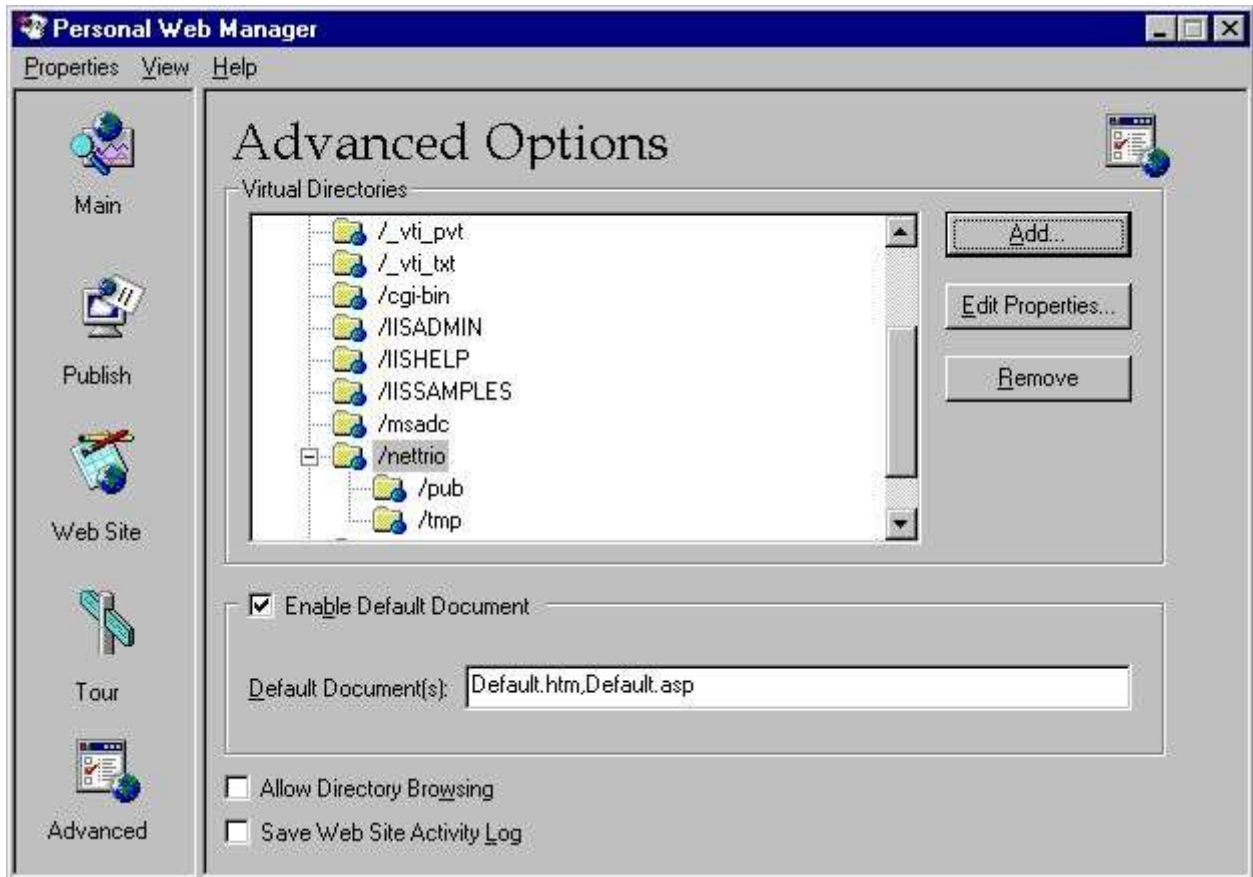


12. PWS - Adding PUB virtual directory



13. PWS - Adding TMP virtual directory

When all tree directories have been created the list should contain the following:



14. PWS - Resulting list of virtual directories

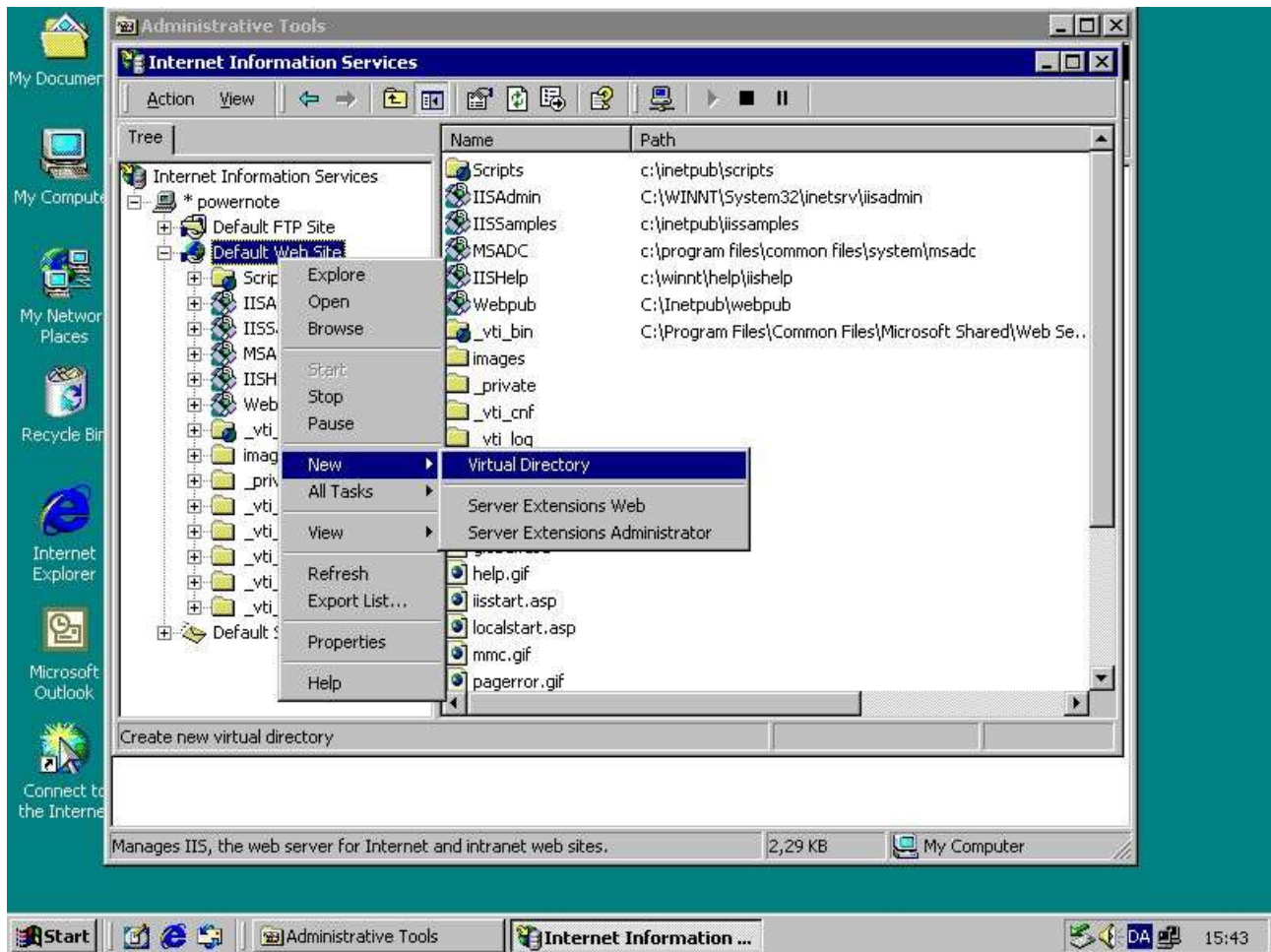
2.7. NET-TRIO and Microsoft Internet Information Server (IIS)

This section shows exactly what has been setup in IIS in order for NET-TRIO to work. When working with Windows 2000 it is possible to maintain virtual directories of IIS by selecting

START - Control Panel - Administrative Tools - Internet Services Manager

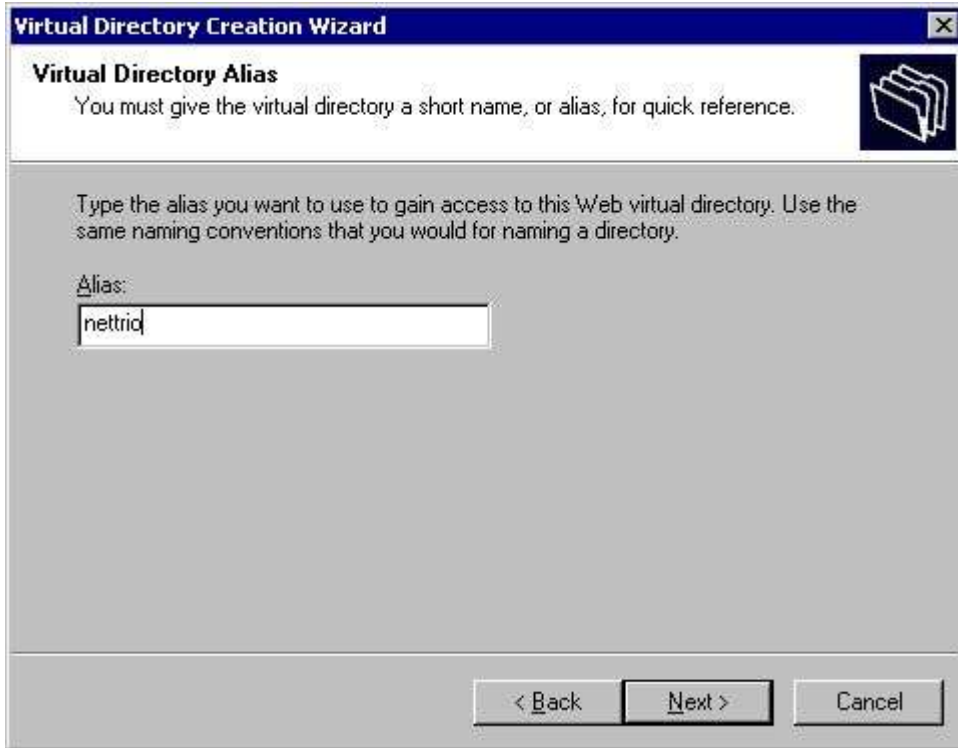
For example, right click on the **Default Web Site** and select

New - Virtual Directory



15. IIS - Adding NETTRIO virtual directory

First a name must be entered



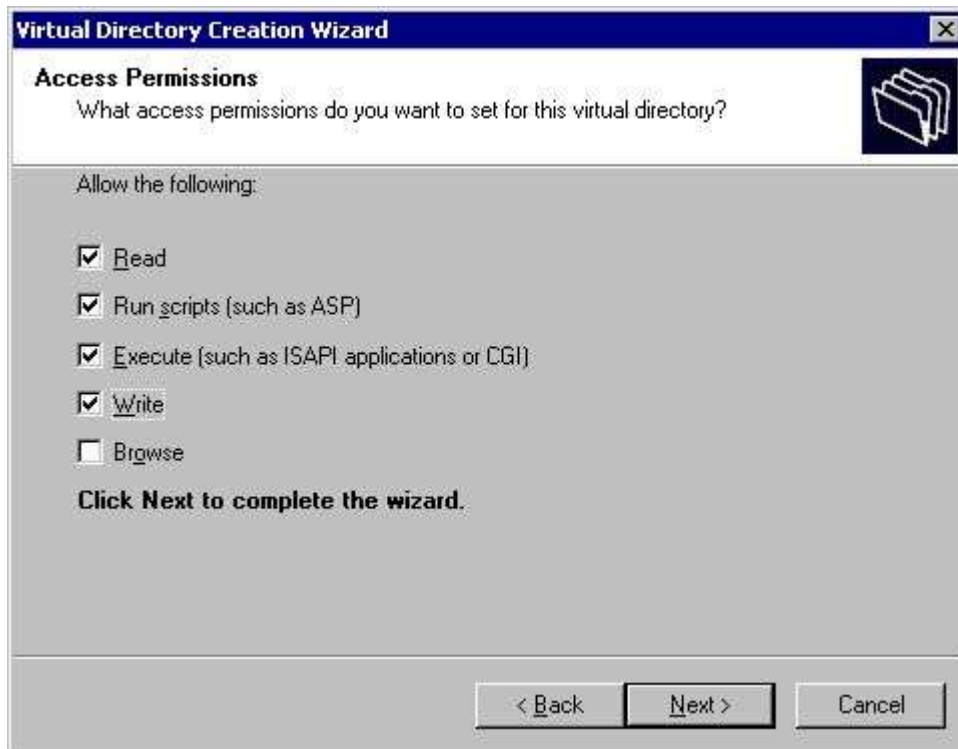
16. IIS - Virtual directory wizard step 1

then the directory location



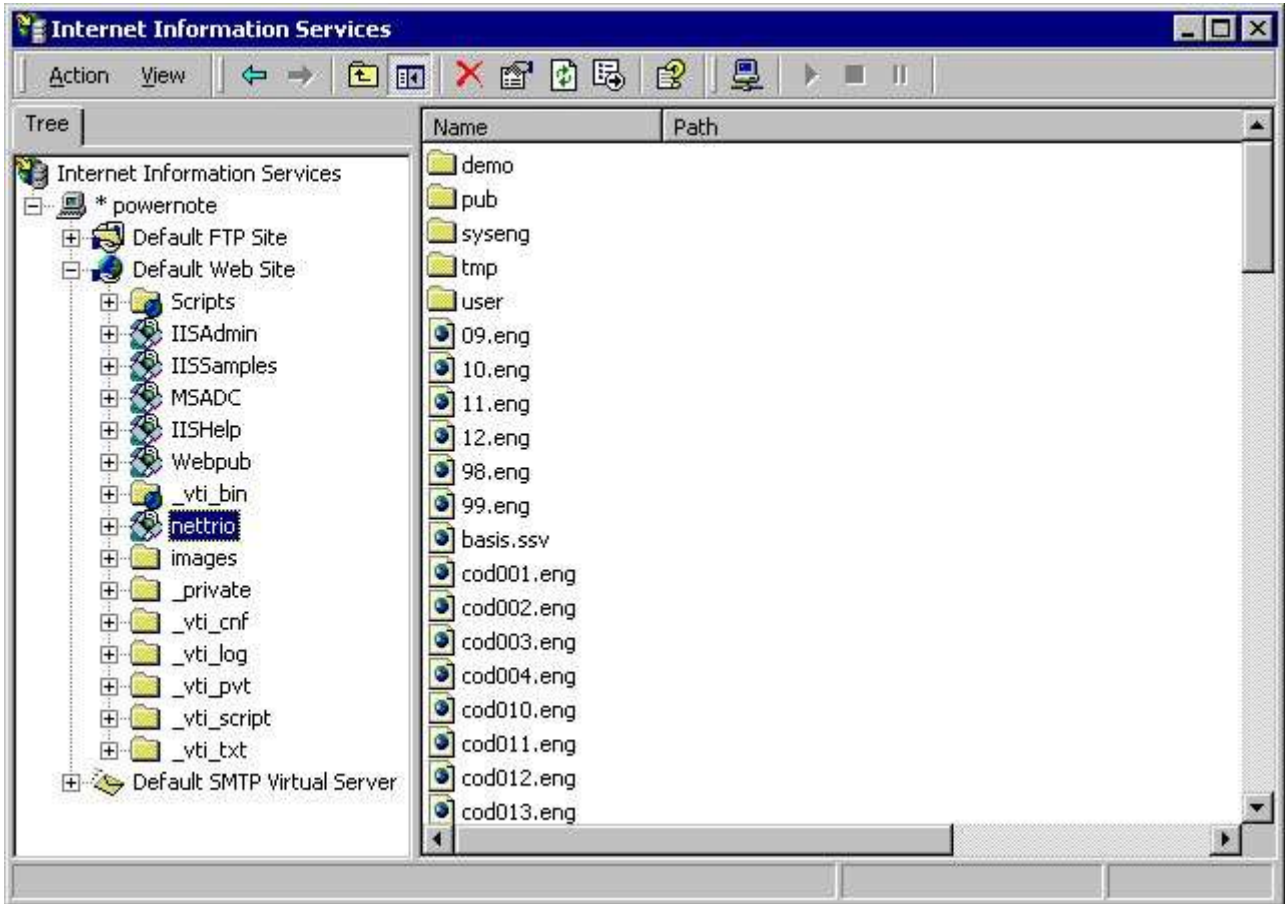
17. IIS - Virtual directory wizard step 2

and finally the access permissions.



18. IIS - Virtual directory wizard step 3

Notice that we have NOT setup tree virtual directories as we did in PWS because it is not necessary. Both **pub** and **tmp** is a subcomponent to the **nettrio** virtual directory.



19. IIS - Resulting list of the Default Web Site

2.8. NET-TRIO and other HTTP servers

NET-TRIO is not limited to work with Microsoft HTTP servers only. The only requirement is to be able to setup virtual directories that is eventually linked to physical locations on the server.

2.9. Standard startup page in HTML format

The NET-TRIO installation provides you with a demosystem and a standard startup page in HTML format, which may be accessed from any client. The standard page is structured in frames where the left side acts as a menu where login and selection may be done and the right side will provide output of a report or a query.

The name of the page is

http://XXX/nettrio/swntYYY.htm

where XXX is the server name and YYY is the language code

DAN - Danish

ENG - English

GER - German

For example, the english startup page is

http://myserver/nettrio/swnteng.htm

If you have succeeded in setting up everything correctly you should be able to access this page from any client browser.

Please remember to start NET-PS Plugin Service first in order to execute NET-IQ queries!



20. IIS - Standard startup page in browser

3. NET-RG Report Generator

NET-RG report execution does not require any client side installation or plugin. However, if you need to return the printout of a report to a client by means of the NET-TRIO screen printer the client must have a SW-Tools TRIO installation and license present.

Printing out in HTML, GIF or another format does not require any special client application.

Reports may still be printed to any Windows printer setup on the NET-TRIO server. The client that executed the report will only receive an acknowledge of that the report is printed, but the actual print is not on screen but physically printed on the requested printer.

With this functionality you may have 100 clients in your intranet that each have their own local printer. If they need to execute reports and produce print on their own printer the NET-TRIO server PC must know this printer, e.g. as a network printer. Now anybody may print reports on anybody's printer.

3.1. System reports

NET-RG contain a couple of system reports which provides a standard way of:

- **Selecting a subsystem (System report 950)**
- **Selecting a report within the selected subsystem (System report 951)**
- **Enter start parameters and execute the selected report (System report 952)**

The reports are ment as samples for you to examine.

You may use the **Report Generator** icon to access the system reports as well as reports from the installed demo system. To access the system reports please select menu

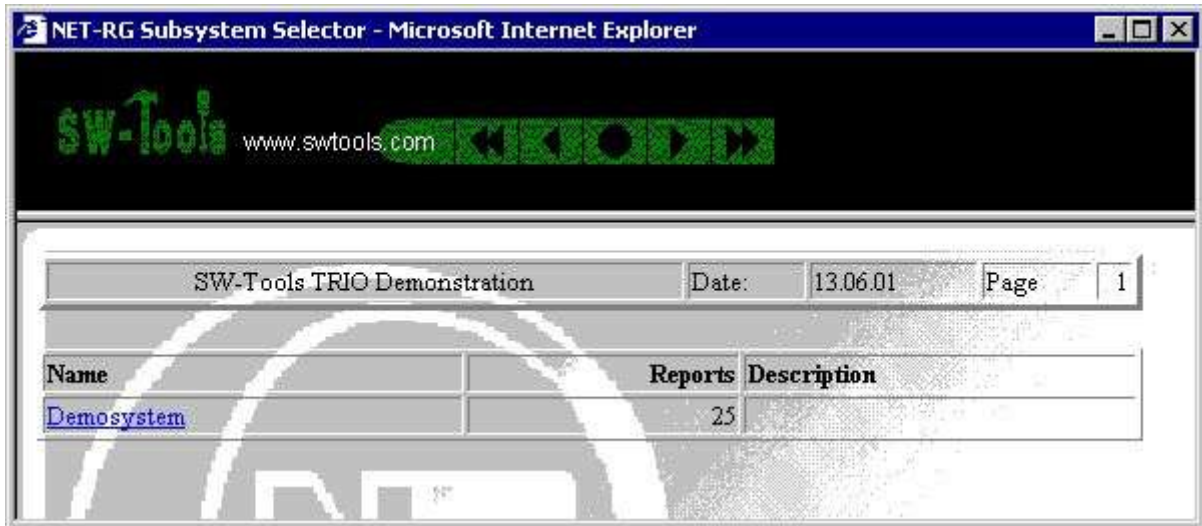
File - Subsystem - System files

3.1.1. Subsystem Selector

The subsystem report will read the **DMSYSTEM.SSV** file to generate a list of all defined subsystems.

According to the **ssv_use** function it will test if the user have access permission to the subsystem. If no access permission or no reports present in the subsystem it will be discarded from the final listing.

The report calculates a text field with a HTML href tag in order to start the **Report Selector** report.



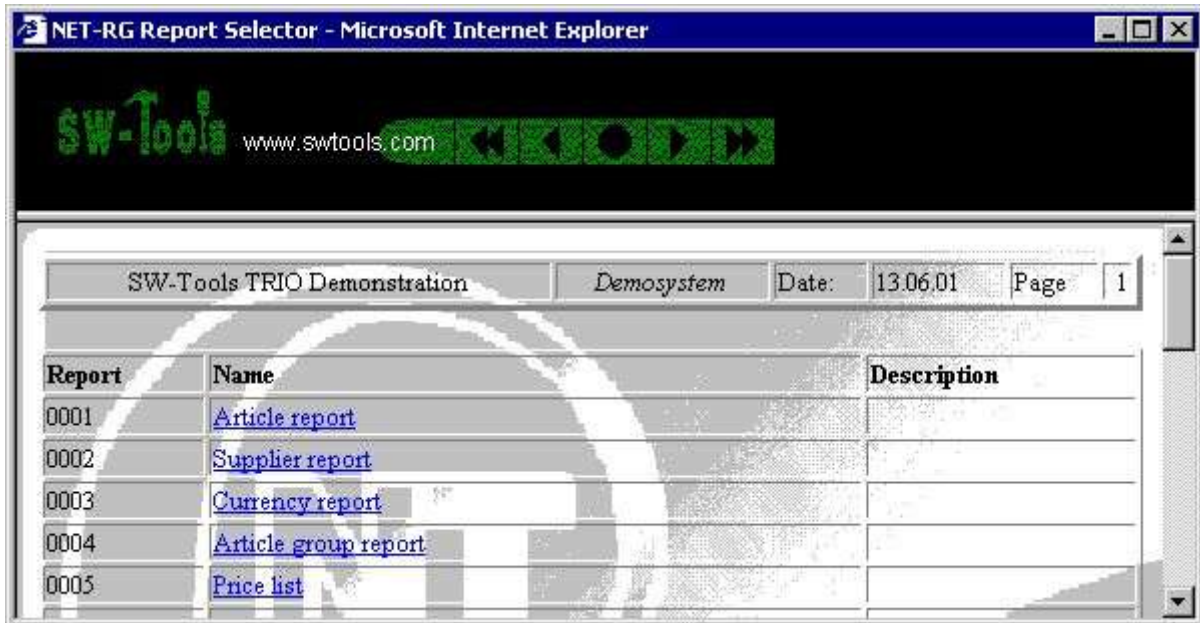
21. NET-RG Subsystem Selector

3.1.2. Report Selector

The report selector will read the **DMREPORT.SSV** file to generate a list of all defined reports within a subsystem. The requested subsystem is given as a data input field.

According to the **ssv_use** function it will test if the user have access permission to the report. If no access permission it will be discarded from the final listing.

The report calculates a text field with a HTML href tag in order to start the **Report Start** report.



22. NET-RG Report Selector

3.1.3. Report Start

The start screen provided by this report contains all known start parameters to a report as known from SW-Tools TRIO. Also, the report start statistic and archiving is present.

The report start report is a bit more complex than the two other reports. It uses a function called **exrep** to produce its HTML output. The definition file for this is located in the same directory as the report source file *DM1952.src* and is named **DM1952.HTM**.

If you need to amend this file please use a plain editor such as *Notepad* or *Wordpad*. It contains plain HTML code but divided into sections **[xxxx]** and including references to fields **xx#99** and calculations **[IF...]**. If you try to use a WYSIWYG HTML editor it may corrupt the structure if this file.



23. NET-RG Report Start

3.1.4. Your own report start page

You may use the **HTML Form** method to setup your own report start page. The table below is a list of common variables which may be used within the form.

NAME	Required	Description
Trio_Uid	Yes	User name
Trio		Yes
TrioSystem		Subsystem (4 digits)
Lan		Languagecode (dan,eng,ger,...)
Trio_0	Yes	Printer
Trio_1		Todays Date
Trio_2		As of Date
TrioIndex		Mainfile index
Trio3		Start From
Trio4		Stop At
Trio_5..Trio_11		Data input #D1..D7
TrioDescend		Reverse Sort Order
TrioTotal		Lowest Total Level
Trio_Psw		Report password

Apart from the predefined variables you may include additional input fields not known to the report itself. However, the report generator provides a subfunction named **cgi_par** which may retrieve the value of any form field.

3.1.4.1. Sample HTML form

The sample is located in the file **swex1eng.htm**.

```

.<HTML>
  <HEAD><TITLE>Report Start Form</TITLE></HEAD>
  <BODY>
    <FORM NAME="myreportstart" METHOD="post"
ACTION="/nettrio/rap00132.exe">
      <INPUT TYPE="hidden" NAME="Trio" VALUE="017">
      <INPUT TYPE="hidden" NAME="TrioSystem" VALUE="0001">
      <INPUT TYPE="hidden" NAME="Trio_Uid" VALUE="user">

      Before you may start the report please select a printer
      <SELECT NAME="Trio_0">
        <OPTION VALUE="1">HTML
        <OPTION VALUE="6">GIF
      </SELECT>
      <BR>

      and select from group
      <INPUT NAME="Trio_5" SIZE=2 MAXLENGTH=2 VALUE="0">
      and to group
      <INPUT NAME="Trio_6" SIZE=2 MAXLENGTH=2 VALUE="9">
      <BR>

      Please enter your email address
      <INPUT NAME="EmailAddress" SIZE=64 MAXLENGTH=64
VALUE="swtools@swtools.com">
      <BR>

      Finally, click Start
      <INPUT NAME="Start" TYPE="submit" value="START">

    </FORM>
  </BODY>
</HTML>
.
```

3.1.4.2. Retrieve form field value

To retrieve a form field value you may use the function **cgi_par**. If your form includes a form field defined as

```
<INPUT NAME="EmailAddress" SIZE=64 MAXLENGTH=64  
VALUE="swtools@swtools.com">
```

your report calculation may be

```
#20 = cgi_par("EmailAddress")
```

Field #20 must be a text field and will now contain the value

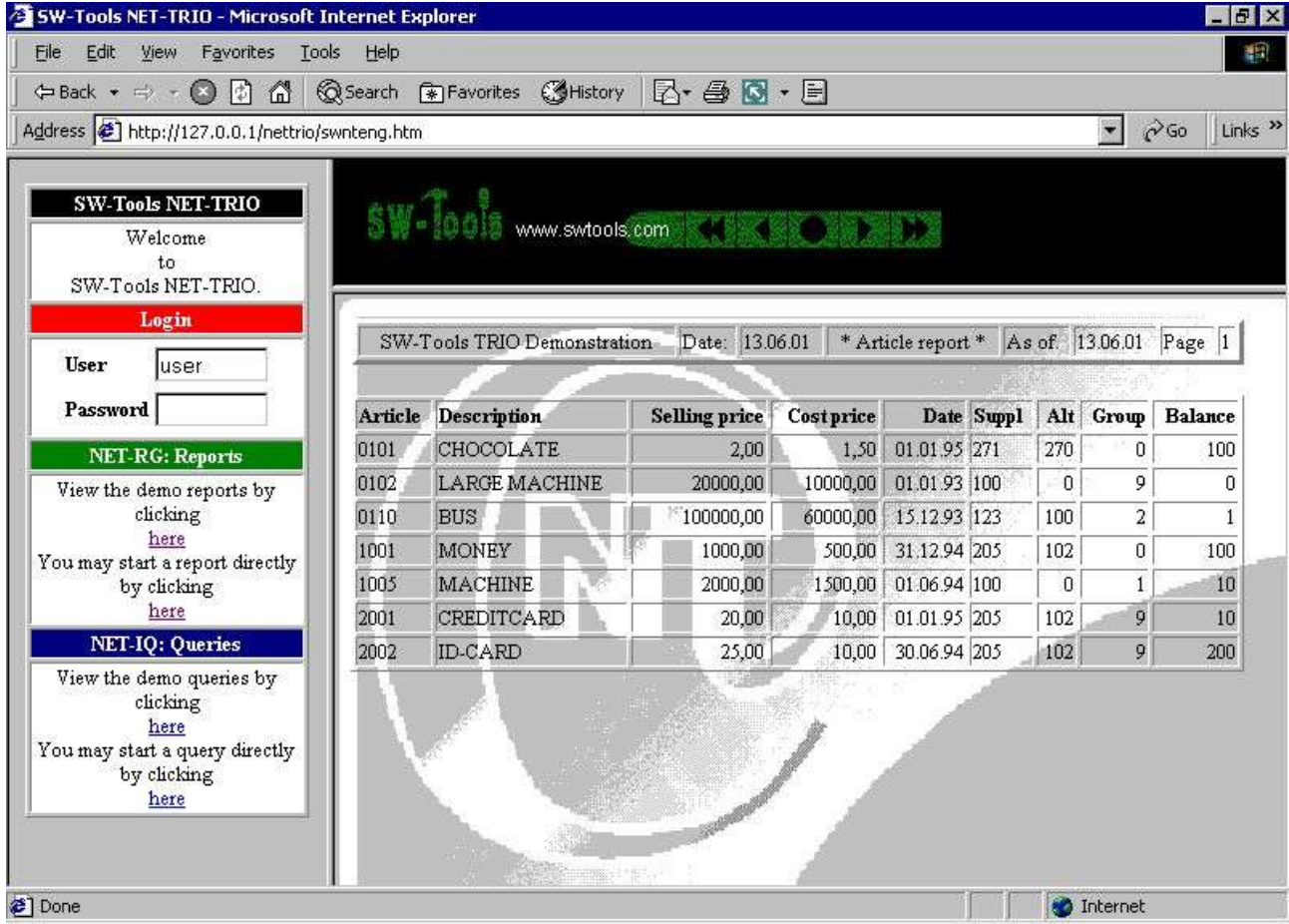
```
swtools@swtools.com
```

3.2. Direct start of report

If you want to start a report directly without selecting subsystem etc, the standard startup page shows you a sample of how to do it. You need to select

You may start a report directly by clicking *here*

The sample will produce the output in the right frame part.



24. Direct start of a report

The HTML code for starting a report directly is done by a javascript function located in the file **SWNT1XXX.HTM**. The function will produce a HTML href

`/nettrio/rap00132.exe?TRIO=1001%20-s1%20-uid=user`

```
<HTML>
<HEAD><TITLE>My Report Start Page</TITLE></HEAD>
<BODY>
```


NET-TRIO

```
    Please click
    <A HREF="http://127.0.0.1/nettrio/rap00132.exe?TRIO=1005%20-s6%20-
uid=user" TARGET="_new">here</A>
    to start report 5 subsystem 1 on printer 6.
</BODY>
</HTML>
```

The sample is located in the file **swex2eng.htm**.

3.3. NET-PA Printer Administration

The printer administration is the same as in TRIO but extended with a **group** field. The group field control the way a report return the output to the client browser.

3.3.1. Standard printers

When NET-TRIO is installed the following printers is defined:

- **HTML**
- **HTML All-In-One**
- **Text**
- **Text All-In-One**
- **RTF**
- **GIF**
- **GIF Landscape**
- **PDF**
- **PDF All-In-One**
- **PDF Landscape**
- **PDF All-In-One Landscape**

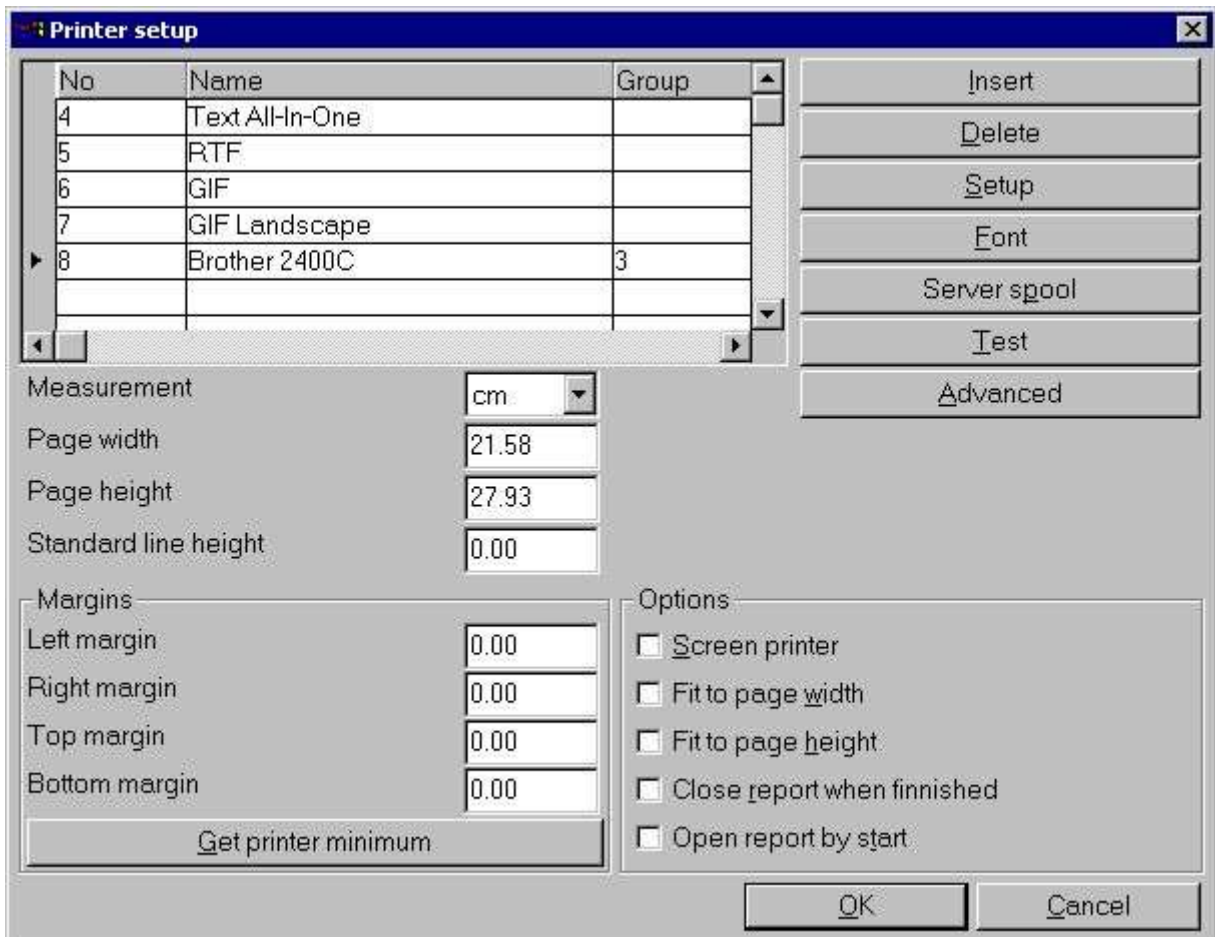
Any printer may be added, modified or deleted.

3.3.2. Printer group field

The printer group field makes reference to a **MYPRTxxx.CGI** file, where **xxx.** is the printer group number. This file contains the HTML code for how to produce the page returned to the client. The following group numbers is reserved by SW-Tools:

Group	Description
0	Any SW-Tools printer (HTML,TXT,RTF,PDF,etc.)
1	Reserved
2	SW-Tools screen printer (requires client side SW-Tools TRIO installation)
3	Windows printer (e.g. HP-Laser,Epson etc.)
4	Reserved
5	Reserved

If setting up a printer on the server you need to specify **group 3**.



25. Setting up a windows printer

4. NET-IQ Intelligent Queries

NET-IQ requires the client side to have a plugin installed which will limit the use to Windows based clients. However, the plugin will provide an object intergrated into any HTML page which supplies a full desktop with multiple query windows open at the same time. This is very important because one of the key benefits of IQ is the ability to interact between query windows according to predefined relations database table in between.

The user interface color settings will be according to the client Windows setting.

The plugin will of course provide the toolbar from IQ and also the menu for each query window, although the menu is not provided as a normal menu bar but rather as a menu button within each query window. This have been choosen to minimize the requirements of refreshing the plugin object too much.

4.1. NET-PS Plugin Service

The plugin service **SWSRV32.EXE** MUST be started on the server in order for any IQ/DATAMASTER application to be started. If it is NOT you will receive an error like this:

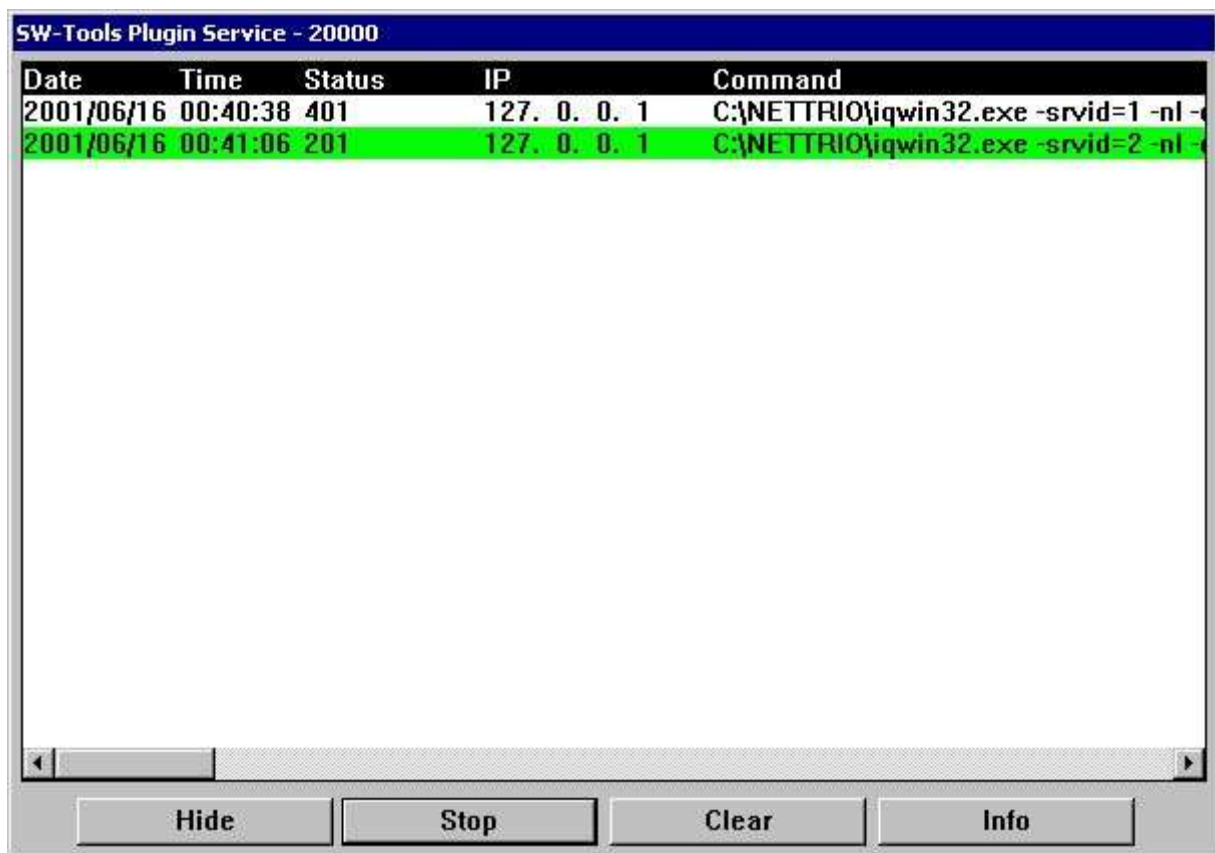
Plugin init: -8 [xxxx]

When NET-PS Plugin Service is running an icon **PS** will be present in the Windows taskbar.



26. NET-PS Plugin Service icon in the taskbar area

You may right click on this icon to view information of who is or have been connected.



27. NET-PS Plugin Service window

A line with white background indicates that the connection is finished, a green line that it is active and a red line that the connection failed.

You may **Stop** the service, **Hide** the window, **Clear** the content of the window or get connection statistics by selecting **Info**.

4.1.1. Error codes

Errorcode	Description
-1	WINSOCK/WSOCK32 DLL cannot be loaded
-2	TCP/IP cannot be initialized
-101	Server cannot create socket
-102	Server cannot bind address
-103	Server cannot list on socket
-104	Server cannot setup async select
-105	Invalid user id
-106	Too many concurrent users
-201	Client cannot create socket
-202	Client cannot connect to SW-Tools NET-PS
-203	Client cannot send start command to SW-Tools NET-PS
-204	Client failed to get response to start command (select)
-205	Client failed to get response to start command (recv)
-206	Client received error response from SW-Tools NET Service
-207	Client cannot setup async select

4.2. Download of the NET-IQ Plugin

The client side plugin installation file is located in the directory where NET-TRIO is installed. It is named

SWNET.CAB

The CABinet file is not digitally signed.

4.3. NET-IQ Plugin

If you select

You may start a query directly by clicking *here*

the standard startup page will start the IQ query 1 from subsystem 1 in the right frame.

If the client does not have the SW-Tools NET-IQ Plugin installed the page will be downloaded.

You may get a security warning because the NET-IQ plugin is not digitally signed.

4.4. System reports

NET-IQ contain a couple of system reports which provides a standard way of:

- **Selecting a subsystem (System report 960)**
- **Selecting a query within the selected subsystem (System report 961)**
- **Execute the selected query (System report 962)**

The reports are ment as samples for you to examine.

You may use the **Report Generator** icon to access the system reports. To access the system reports please select menu

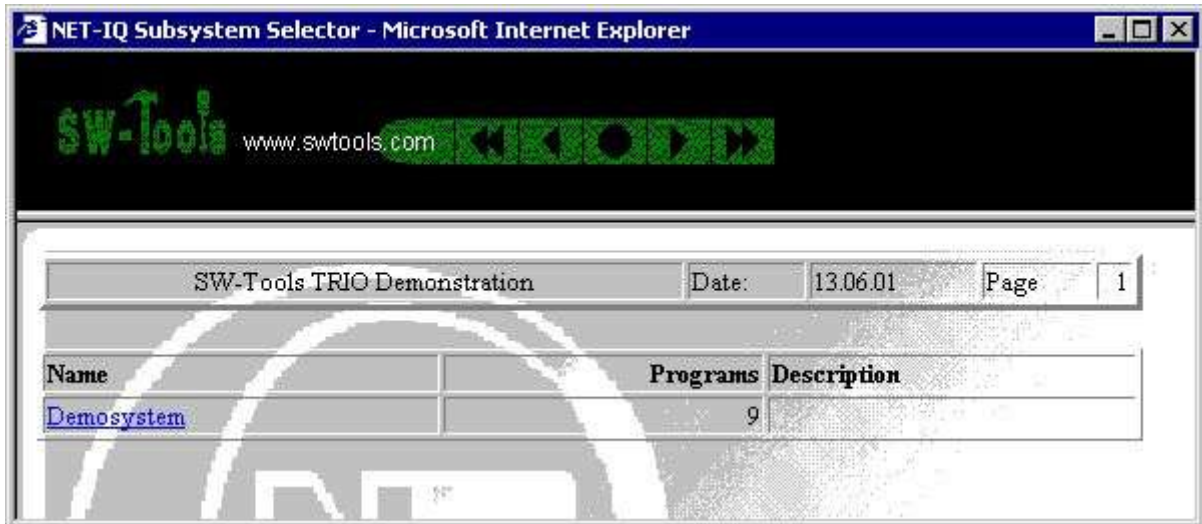
File - Subsystem - System files

4.4.1. Subsystem Selector

The subsystem report will read the **DMSYSTEM.SSV** file to generate a list of all defined subsystems.

According to the **ssv_use** function it will test if the user have access permission to the subsystem. If no access permission or no queries present in the subsystem it will be discarded from the final listing.

The report calculates a text field with a HTML href tag in order to start the **Program Selector** report.



28. NET-IQ Subsystem Selector

4.4.2. Program Selector

The program selector will read the **IQREPORT.SSV** file to generate a list of all defined queries within a subsystem. The requested subsystem is given as a data input field.

According to the **ssv_use** function it will test if the user have access permission to the program. If no access permission it will be discarded from the final listing.

The report calculates a text field with a HTML href tag in order to start the **Program Start** report.

Program	Name	Description
0001	Suppliers	
0002	Articles	
0003	Article groups	
0004	Currency	
0005	Article/Picture	

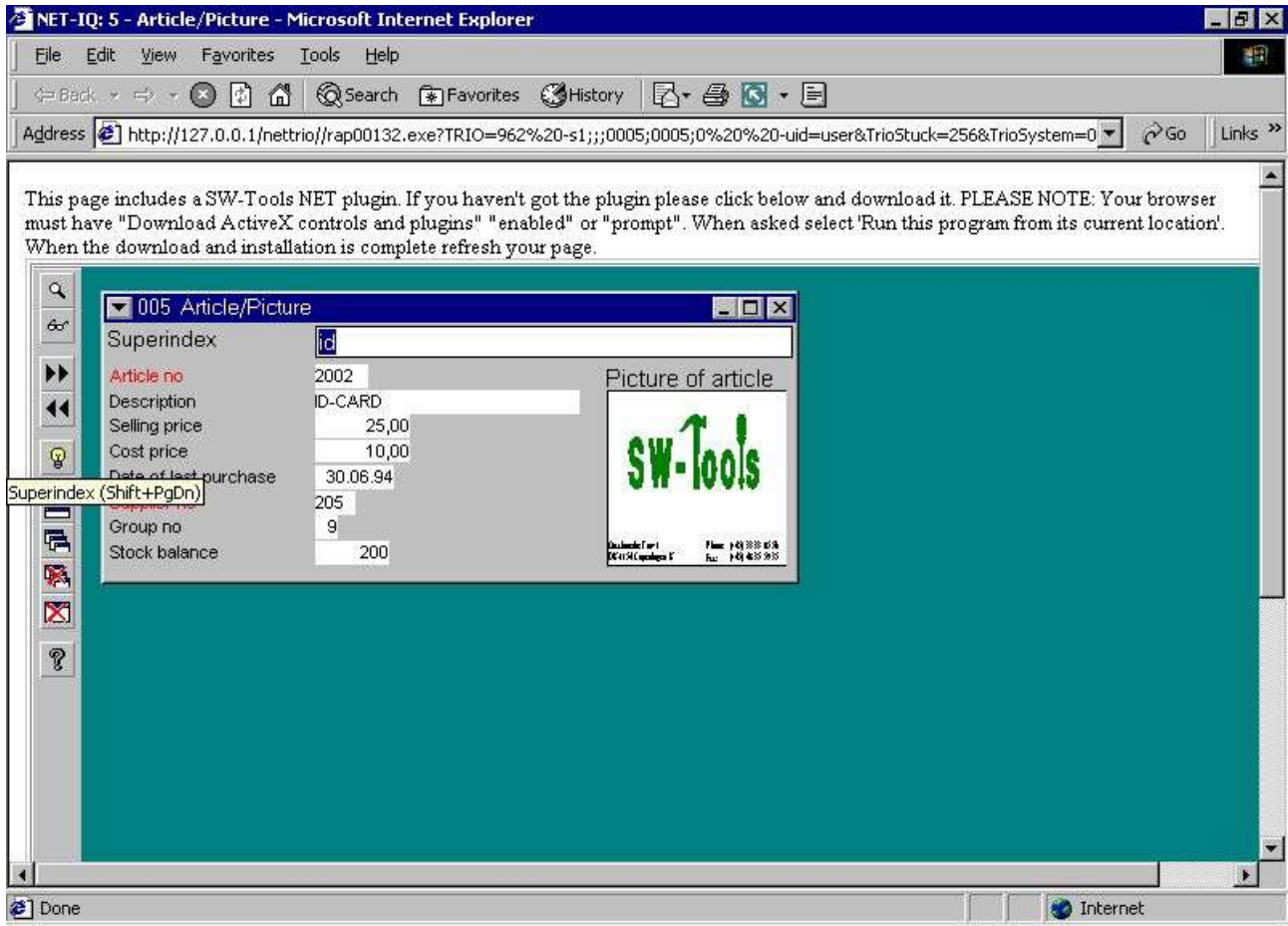
29. NET-IQ Program Selector

4.4.3. Program Start

The program start returns a HTML page which includes the embedded object required for any IQ query.

The program start report is a bit more complex than the two other reports. It uses a function called **exrep** to produce its HTML output. The definition file for this is located in the same directory as the report source file *DM1962.src* and is named **DM1962.HTM**.

If you need to amend this file please use a plain editor such as *Notepad* or *Wordpad*. It contains plain HTML code but divided into sections **[xxxx]** and including references to fields **xx#99** and calculations **[IF...]**. If you try to use a WYSIWYG HTML editor it may corrupt the structure if this file.



30. NET-IQ Program 5 started

4.4.3.1. Syntax in DM1962.HTM

The file embeds an IQ query using the following HTML tag:

```
<OBJECT ID="SWNetIQ"
NAME="SWNet.IQ"
CODEBASE="http://#68#66_swnet.cab"
CLASSID="CLSID:1C30CBCE-C520-11D4-9EAC-00001CE5A2E3"
STANDBY="Loading SW-Tools NET ActiveX...."
WIDTH="800"
HEIGHT="600">
<PARAM NAME="Server" VALUE="#68">
<PARAM NAME="ServicePort" VALUE="#69">
<PARAM NAME="Flags" VALUE="4">
<PARAM NAME="Program" VALUE="#38">
<PARAM NAME="TimeOut" VALUE="">
<PARAM NAME="UserIDandPSW" VALUE="#39">
<PARAM NAME="ExecuteURL" VALUE="">
<PARAM NAME="AdditionalIQPars" VALUE="">
</OBJECT>
```

The report will replace #68 with the **Server name**, #66 with the nettrio virtual directory name, #69 with the **Service portnumber**, #38 with the **Subsystem*1000+Program number** and #39 with the **User name**.

Please NOTE the parameter **Flags** may be a value added up by:

Field	Bitvalue	Description
Server		Server IP-address or hostname.
Serviceport		Port number of SW-Tools NET-PS Plugin Service.
Flags		User interface options
	1	Transparent background
	2	Transparent toolbar background
	4	Toolbar to the left
	8	Toolbar to the right
	16	Toolbar on the bottom
	32	No close button in window title
	64	No maximize/restore button in window title
	128	No minimize button in window title
	256	No move of window allowed
	512	No size of window allowed
	1024	No menu button in window
	2048	No window frame and title
	4096	No toolbar
	8192	Toolbar autohide
	16384	Always maximize windows
	32768	Report window resize to server (Business Intelligence Viewer)
Program		Program number XXXYYY where XXX is the subsystem number and YYY is the program number.
Timeout		Timeout. If the client does not operate within the timeout the query will be disconnected by the server. If no timeout is given the default is 20 minutes. The timeout must be given in seconds.
UserIDandPSW		User name,Password. If the first character is "?" the plugin will display a dialog with user name and password field to enter.

NET-TRIO

ExecuteURL
AdditionalIQPars

URL to execute before plugin connection
Additional parameters for IQ

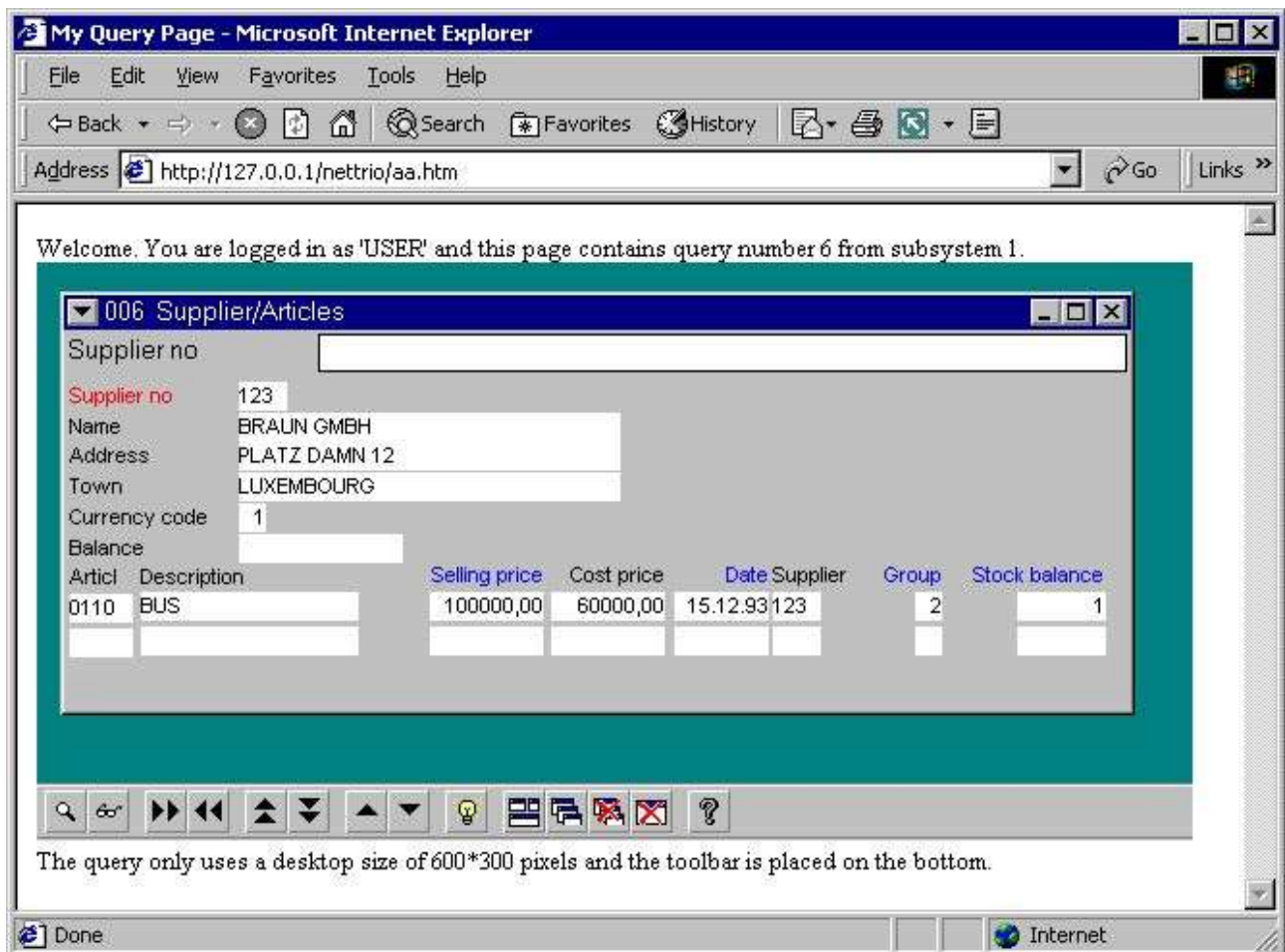
Please refer to any *HTML manual* for an explanation of the **OBJECT** tag.


```

<BR>
<OBJECT ID="SWNetIQ"
  NAME="SWNet.IQ"
  CODEBASE="http://127.0.0.1/swnet.cab"
  CLASSID="CLSID:1C30CBCE-C520-11D4-9EAC-00001CE5A2E3"
  STANDBY="Loading SW-Tools NET ActiveX...."
  WIDTH="600"
  HEIGHT="300">
  <PARAM NAME="Server" VALUE="127.0.0.1">
  <PARAM NAME="ServicePort" VALUE="20000">
  <PARAM NAME="Flags" VALUE="16">
  <PARAM NAME="Program" VALUE="1006">
  <PARAM NAME="TimeOut" VALUE="">
  <PARAM NAME="UserIDandPSW" VALUE="user">
  <PARAM NAME="ExecuteURL" VALUE="">
  <PARAM NAME="AdditionalIQPars" VALUE="">
</OBJECT>
<BR>
  The query only uses a desktop size of 600*300 pixels
  and the toolbar is placed on the bottom.
</BODY>
</HTML>

```

The sample is located in the file **swex3eng.htm**. This results in



32. The sample NET-IQ HTML page

NET-TRIO

Please remember that the reference to 127.0.0.1 must be changed to the server name you have setup in your NET-TRIO Preference.

4.6. Functionality

4.6.1. IQ menus

The following menus are not within the NET-IQ client.

Menu	Reason
Save	Because it should NOT be allowed.
Print setup	Because it can be done from the browser.
Hardcopy of window	
Hardcopy of screen	
Edit	Because no amendment of the query is possible.
View-Help...	Because the saved default is used and may not be changed.
Help	Because the help available depends on the Web page that includes the NET-IQ plugin.

5. NET-DM DATAMASTER

As known from SW-Tools TRIO, DATAMASTER only differs from IQ in terms of being able to update data and perform input on any form field. Therefore the description of how DATAMASTER works is no different from what is described in the previous chapter concerning NET-IQ.

6. Standard HTML, picture, JAVASCRIPT and system files

6.1. Standard public files

This is a list of the standard public files installed by NET-TRIO:

- htm-frst.gif - HTML printer first page button**
- htm-next.gif - HTML printer next page button**
- htm-prev.gif - HTML printer previous page button**
- htm-last.gif - HTML printer last page button**
- htm-logo.gif - HTML printer logo**
- htx-bkgn.gif - HTML printer background graphic**
- htx-log2.gif - Logo shown at report start screen**
- bladr.gif - Image for page browsing**
- sta-eng.htm - Statistics HTML page**

6.2. JAVASCRIPT files

This is a list of the standard JAVASCRIPT files installed by NET-TRIO in the public directory:

bladr.js - JAVASCRIPT for page browsing

common.js - JAVASCRIPT for common report start functions

start.js - JAVASCRIPT for report start functions

status.js - JAVASCRIPT for report statistics

6.2.1. SWNET.JS generated file

The file contains some variables which may be used in connection with any JAVASCRIPT code you may need for NET-TRIO.

```
.  
    // (c) SW-Tools swnet.js  
    SWNT_mas="127.0.0.1"  
    SWNT_net="/nettrio/"  
    SWNT_bin=""  
    SWNT_pub="pub/"  
    SWNT_tmp="tmp/"  
    SWNT_eng_jumpto="Jump to page:"  
    SWNT_dan_jumpto="Gå til side:"  
    SWNT_ger_jumpto="Gehe zum Seite:"  
    SWNT_eng_liciqerr="Sorry but NET-IQ is busy - Please try again later"  
    SWNT_dan_liciqerr="Desværre er NET-IQ optaget - Prøv venligst senere"  
    SWNT_ger_liciqerr="NET-IQ ist leider belegt - Bitte versuchen Sie  
später"
```

.
All the variables named **SWNT_xxx_yyy** where xxx is the language code is taken from the **SWNET.TXT** file. This file contains any language dependent text.

6.3. Pictures, logo, static HTML pages

File of these types should be located in the public directory.

7. Temporary files

All temporary files will be stored in the directory setup in the NET-TRIO preferences. They will NOT be removed automatically. So you need to cleanup the files manually. The reason for not doing this automatically is that the temporary files may be accessed by report start through the **Start log**.

8. Requirements

8.1. Supported Web Servers

Technically all SW-Tools NET solutions may be used on any server running on any Windows platform. However, we internally have been using Windows 2000 and IIS (Internet Intermination Server).

8.2. Supported browsers

Technically all SW-Tools NET solutions may be used from any browser. However, we internally have been using

- **Microsoft Internet Explorer (4.0 and 5.0)**
- **Netscape (Version 6.0)**
- **Opera (Version 5.0)**

8.3. Firewall

If you are using a firewall any SW-Tools NET Service **MUST** be allowed to be started using a range of TCP ports on the server. For example, the SW-Tools IQ/DATAMASTER service **IQWIN32.EXE** must be allowed in the firewall to operate on the required range of TCP ports.

8.4. Router

If you are using a router it might be necessary to modify the NAT table. According to the port numbers used in any SW-Tools NET plugin each port number **MUST** be assigned to the correct IP-address in order to work.

9. Subfunctions

In order to support HTML parameters and generation some new subfunctions have been introduced, as well as subfunctions for menu control from a report program.

9.1. CGI PAR - Get CGI parameter

text cgi_par(Text *par1*)

Description: This function gets the requested CGI parameter information.

Returnvalue: String containing the parameter

See also: CGI WEBNAME, EXREP

Example:

```
#l1=cgi_par("TRIO3")      /* Get an input field (Start from)
#l1=cgi_par("3")         /* Get parameter no. 3 (numbered from 1..)
#l1=cgi_par("ssv,LM_3")  /* Get parameter ssv, line id LM_3= or LM_3_nn=
#l1=cgi_par("ssv,LM")   /* Get parameter ssv, line id LM= or LM_nn=
#l1=cgi_par("ssv,3")    /* Get parameter ssv, line 3 (numbered from 1..)
```

9.2. CGI WEBNAME - Get CGI parameter

Number cgi_webname(Text *par1*, Number *par2*)

- 10 = Add local nettrio directory (homepath) ex. c:\nettrio**
- 11 = Local tmp to web tmp ex. c:\nettrio\tmp\super\001x.htm ==> /nettrio/tmp/super/001x.htm**
- 12 = Local tmp to web tmp ex. c:\nettrio\tmp/super/001x.htm ==> nettrio/tmp/super/001x.htm**
- 13 = Web tmp to local tmp ex. /nettrio/tmp/super/001x.htm ==> c:\nettrio\tmp\super\001x.htm**
- 14 = Insert web executable ex. rap00132.exe ==> /nettrio/bin/rap00132.exe**
- 15 = Get value from WIN.INI ex. VDpub ==> pub, NetServer ==> www.swtools.com**
- 100 = Get all NET-TRIO parameter values as SSV string**

Description: This function translates local filename to/from web filename The CGI-Environment variable PATH_WEB is used for this, if PATH_WEB not present (or not running CGI), WIN.INI [TRIO] web=... is used, it is NON-CGI reports may build websites

x: length of webpath

See also: CGI PAR

Example:

```
#11="d:/web/myfile.ssv"
cgi_webname(#12,#11,1)      /* #11 becomes /myfile.ssv
cgi_webname(#12,#11,0)      /* #11 becomes d:/web/myfile.ssv again
cgi_webname(#12,#11,2)      /* #11 becomes myfile.ssv
```

9.3. **EXREP** - External report file handling for HTML generation

Number `exrep(Text par1, Text par2, Text par3)`

Description: EXREP takes [sections] in an input file and produces an output file, which may be returned as a result of an CGI-query.

The input file must be created by some plain text editor, you may name the file individually or place these together with the report source, for a report no.47, the source is DM1047.SRC, the EXREP input filename defaults to DM1047.HTM

The following commands may be given in *par1/par2* for EXREP:

```
exrep("OPEN","filename")  Open input file, default DMnnnn.htm
exrep("OUTPUT","filename") Open output file
exrep("FLUSH")           Flush input file to STDOUT (return from CGI)
exrep("CLOSE")          Close input and output file
exrep("PRINT","label")   Print the contents of [label]
```

In the input file fields may be referenced as:

```
#17           This field
#17&'(1,2)    Leading zeroes, zero suppress, from-to
#17(3)       Occurrence
#17input     Pass field thru section [input(#17_)]
WW#3        Workfield, (may be given as #107 also)
```

The input file may contain the commands:

```
[label]       Label for PRINT, ends any previous label
[LET expression]  Invoke calculations on the given expression
[IF expression]  Calculate and skip next lines if false (0)
[ELSE]        else
[ENDIF]       end if
```

The *Par3* should normally be omitted, EXREP has the possibility to work with 10 different input/output files concurrently. `EXREP("print","head","0-3,5")` will read input files 0,1,2,3,5 and write to the output files "0,1,2,3,5".

Returnvalue:0

See also: [CGI PAR](#), [CGI WEBNAME](#)

Example:

The report 47 calculations may be:

```
first           /+ By start of the report
  exrep("print","head") /+ Print a heading
after          /+ For each record selected in the file
  exrep("print","line") /+ Print a line
last          /+ When report is finished
  exrep("print","foot") /+ Print the footer
  exrep("flush") /+ And return the CGI-Output
.
```

And the input file DM1047 may look like:

```
[head] <html><head><TITLE> *** WW#1 *** </TITLE></head><body>
      <TABLE>
        <TR> <TH>No</TH> <TH>Name</TH> </TR>
[line]
        <TR> <TD>#1</TD> <TD>#2 </TD> </TR>
[foot]
```

NET-TRIO

</TABLE></body></html>

9.4. **ssv_repla** - Replacements in textstring

number ssv_repla(text *par1*, text *par2*, number *par3*, Bitflag *par4*, number *par5*, number *par6*)

Par6: 0 or max number of replacements to be done

Description: All strings from *par2* found in *par1* are replaced.

Returnvalue: Number of replacements done.

Example:

```
#11="/sys/eng/aaa"  
ssv_repla(#11,"eng;ger;sys;syseng") /* #11 becomes syseng/ger/aaa
```

9.5. **ssv_use** - Get user permissions

text ssv_use(number *par1*, number *par2*)

Par2: Program or Subsystem number

Description: This function is used to check, if user has permission for a program.

1=Ok, goon

See also: USERINFO

Example:

```
#11=ssv_use(210,6) /* Check if report 6 is allowed
```

9.6. **SUBSYS**- Change current subsystem (RAP)

number SUBSYS(Text *par1*)

Parameters: *par1* : Subsystem number as "0001"

Description: Used for selector (system) reports before fileopen, as the filenames are dependent on the selected subsystem number.

Returnvalue: 0

See also: OPEN

Example: SUBSYS("0001") /+ Shift to subsystem 1 OPEN(PR) /+ And open
report overview file

9.7. CHAIN- Execute URL in a new window (IQ)

The CHAIN command is extended with the following syntax:

CHAIN("url:http://www.swtools.com/index.htm", "_blank")

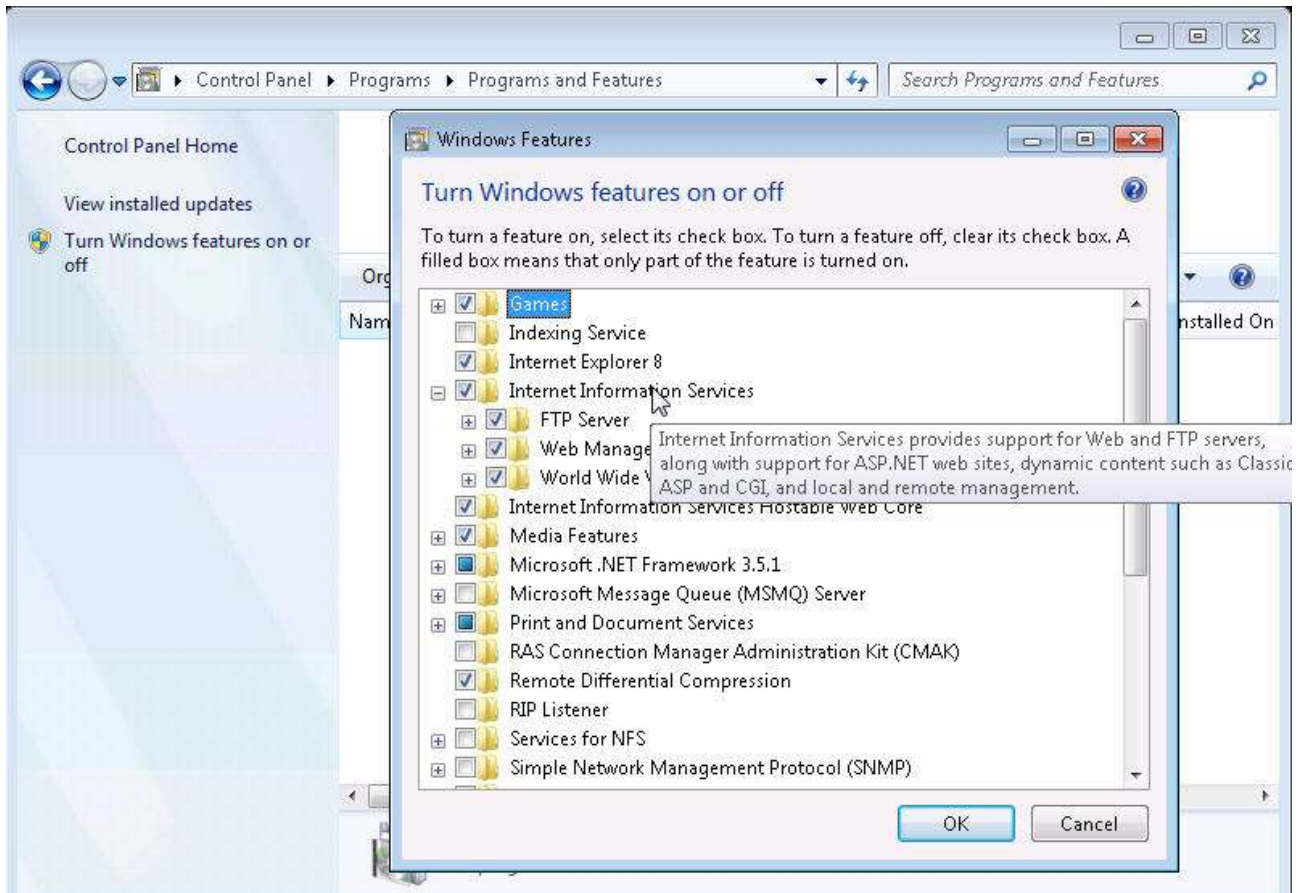
which will start a new browser windows with the content given by the URL. This means, that if the program name start with "url:" and the session is a NET-IQ session you will have this functionality.

10. Windows Server 2008, IIS 7 and Windows 7 installation

As the Internet Information Server has changed pretty much in these releases we will add a chapter on how to install and troubleshoot on these systems.

10.1. IIS installation

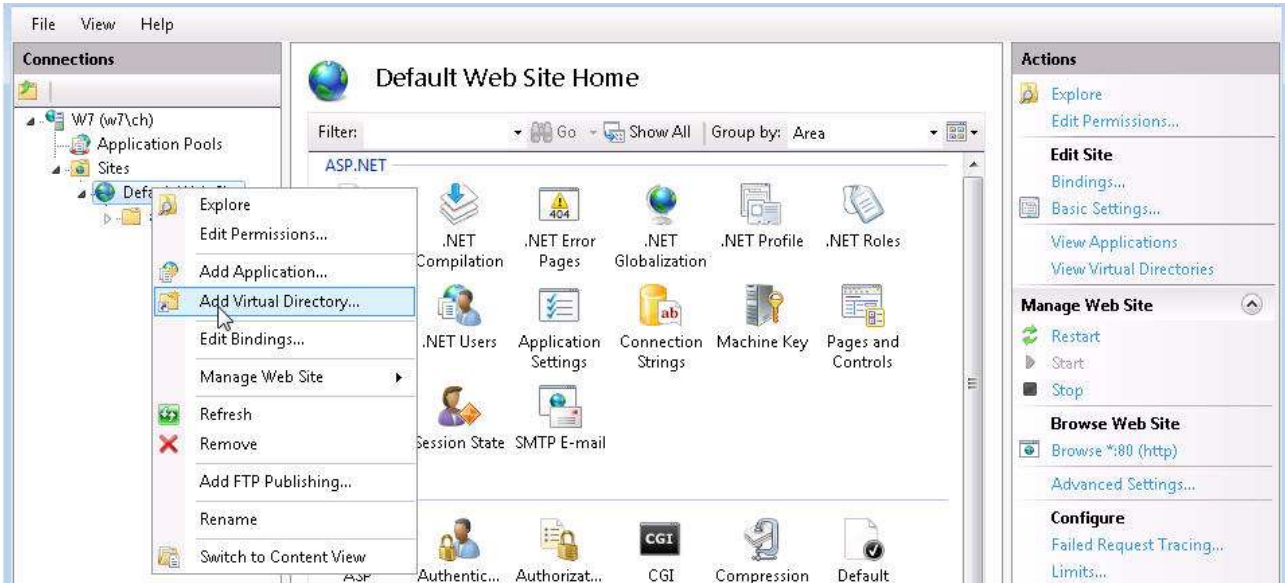
After installation of Windows you will have to add IIS as a feature from the control panel as the example shows for Windows 7:



33. IIS

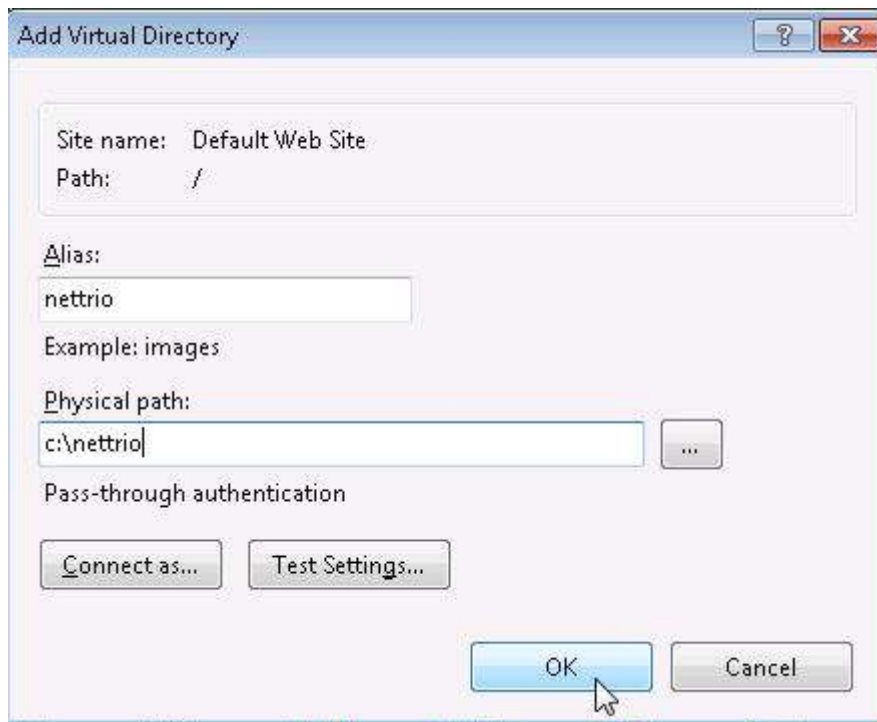
The installation of SW-Tools Nettrio programs should be done as described above, we assume the default settings of `c:\nettrio` is used below.

You will then have to select the IIS management console and create a website or adjust the settings for the default website, as shown below the 'nettrio' virtual directory is created:



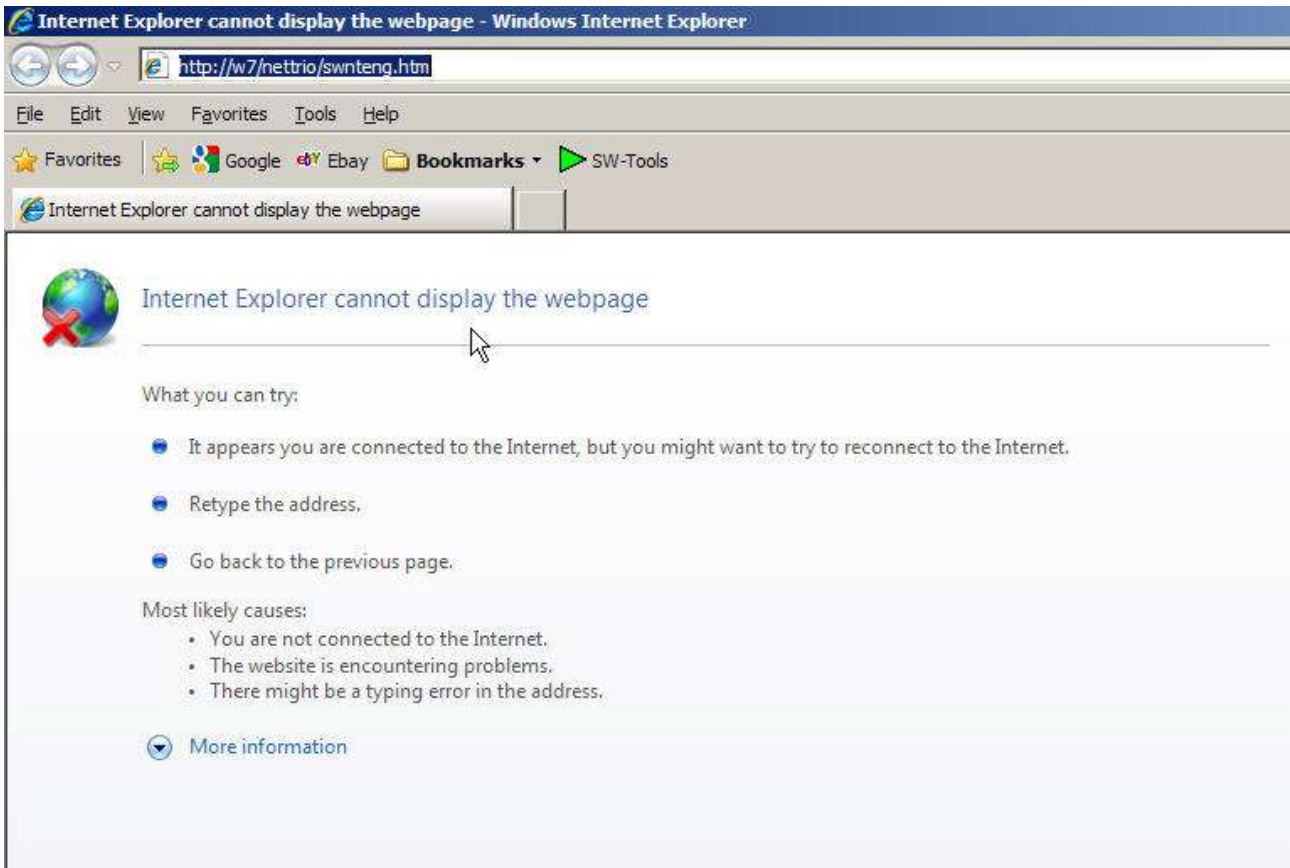
34. IIS

The web nettrio path should be set to point to the server nettrio path:



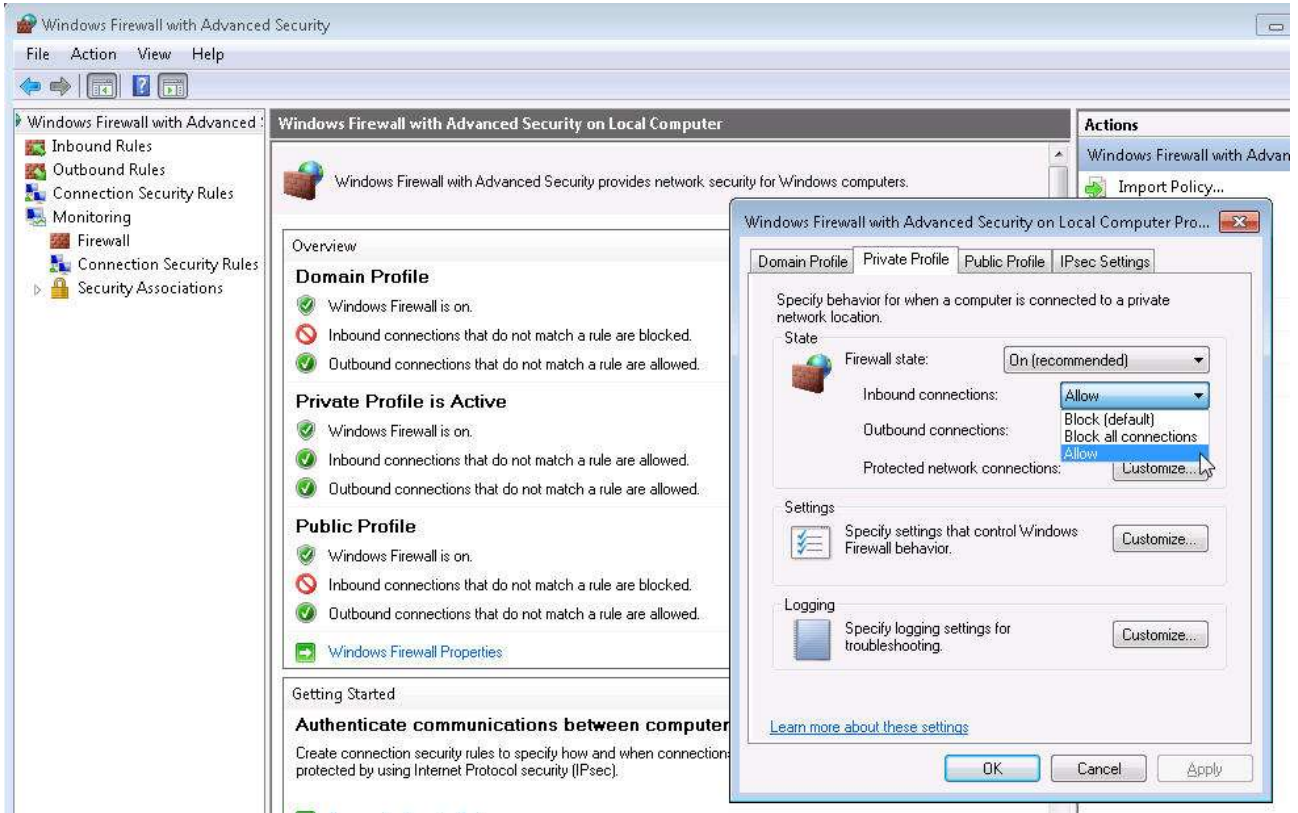
35. IIS

Now you may try to call up the website:



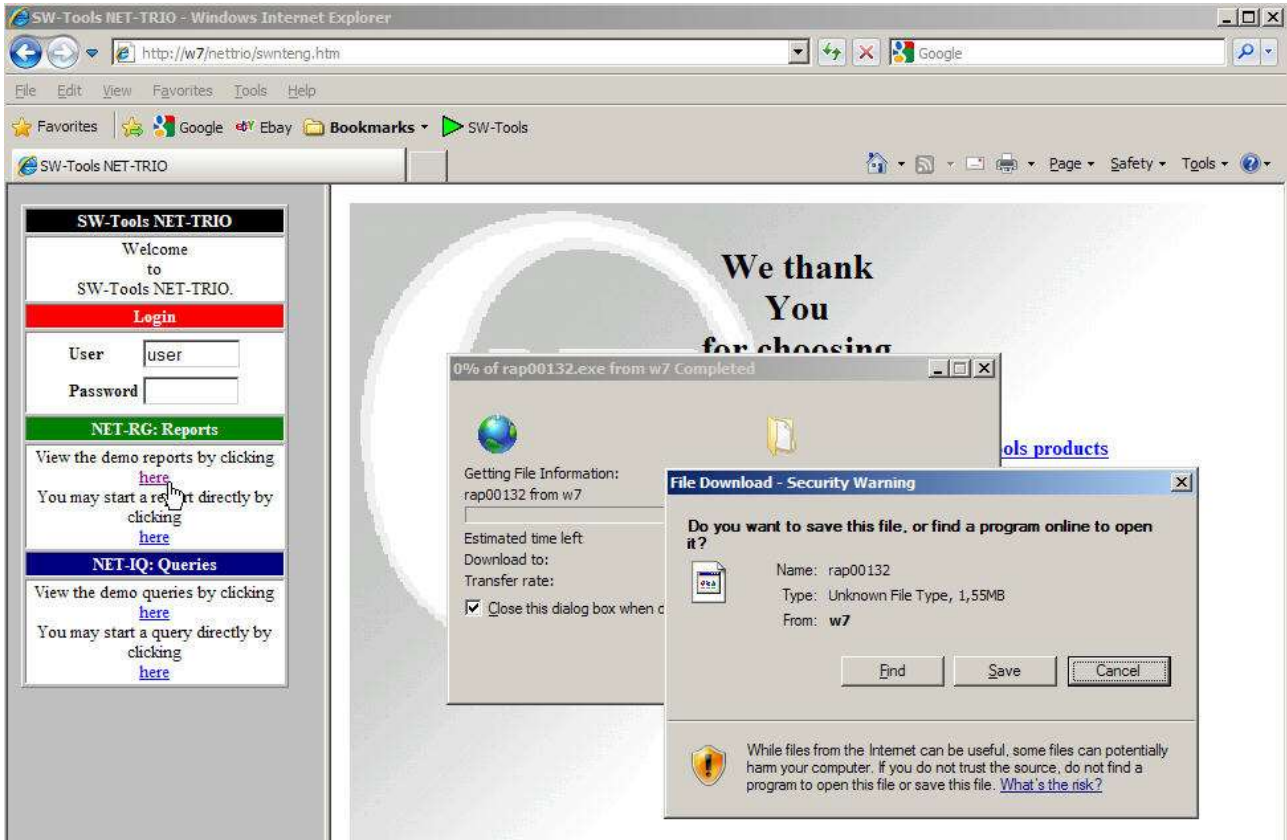
36. IIS

But it may be blocked by Windows Firewall:



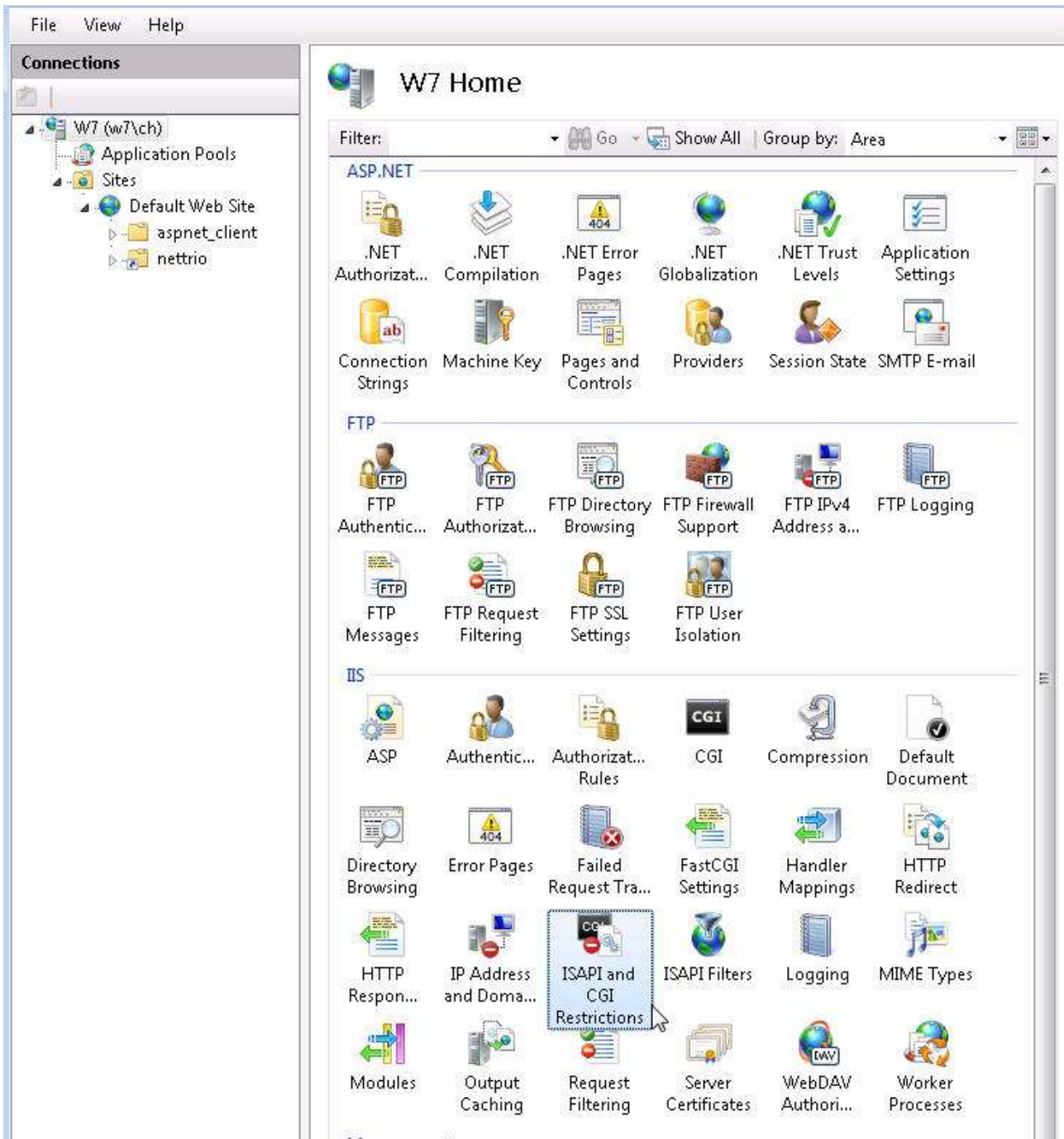
37. IIS

When you have got the startsite you will have a problem with the CGI-programs:



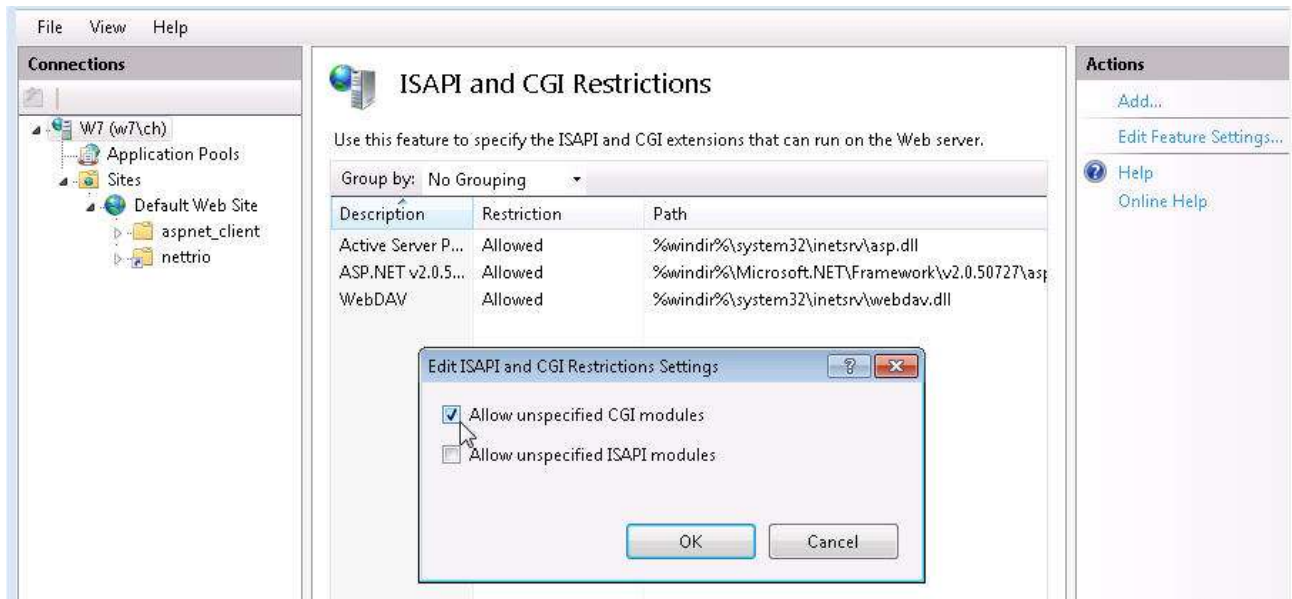
38. IIS

The CGI-programs must be activated for the webserver in IIS in general:



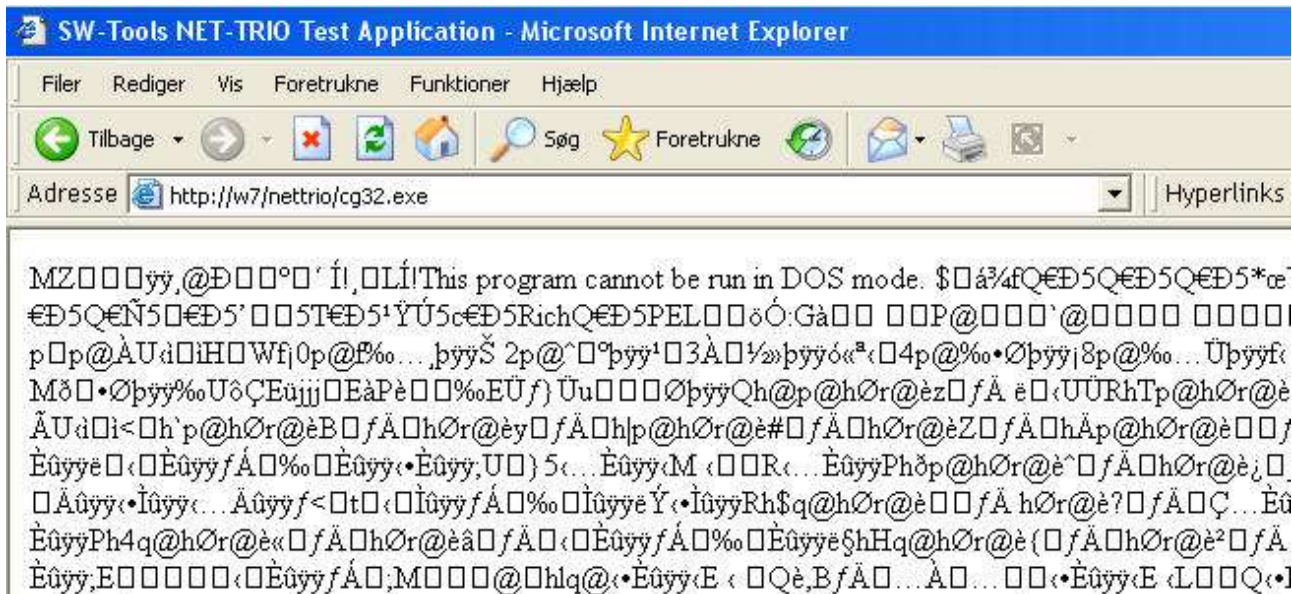
39. IIS

where you may allow all EXE files to run as CGI or select distinct files only:



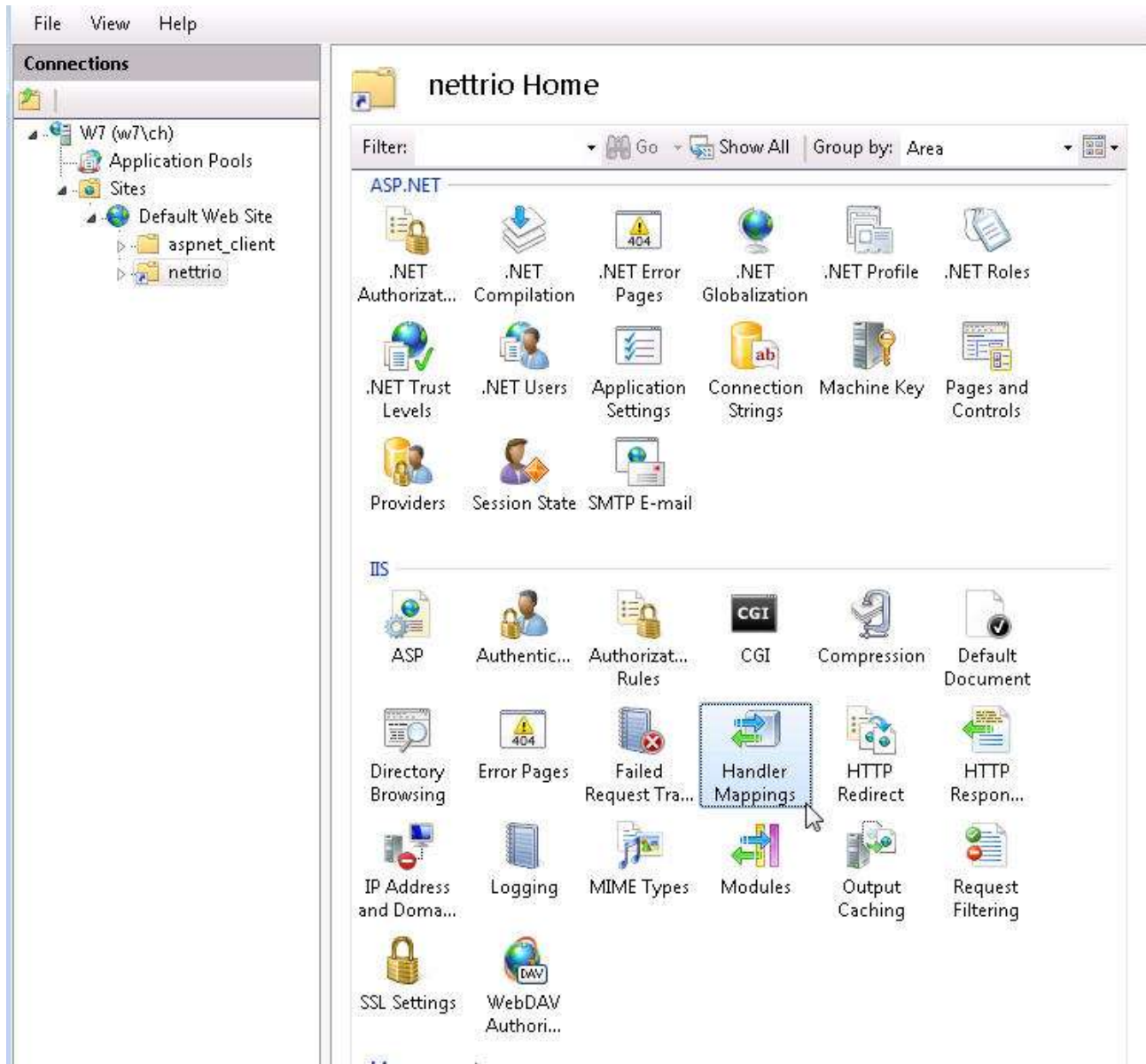
40. IIS

If you try to refresh the testpage you will get:



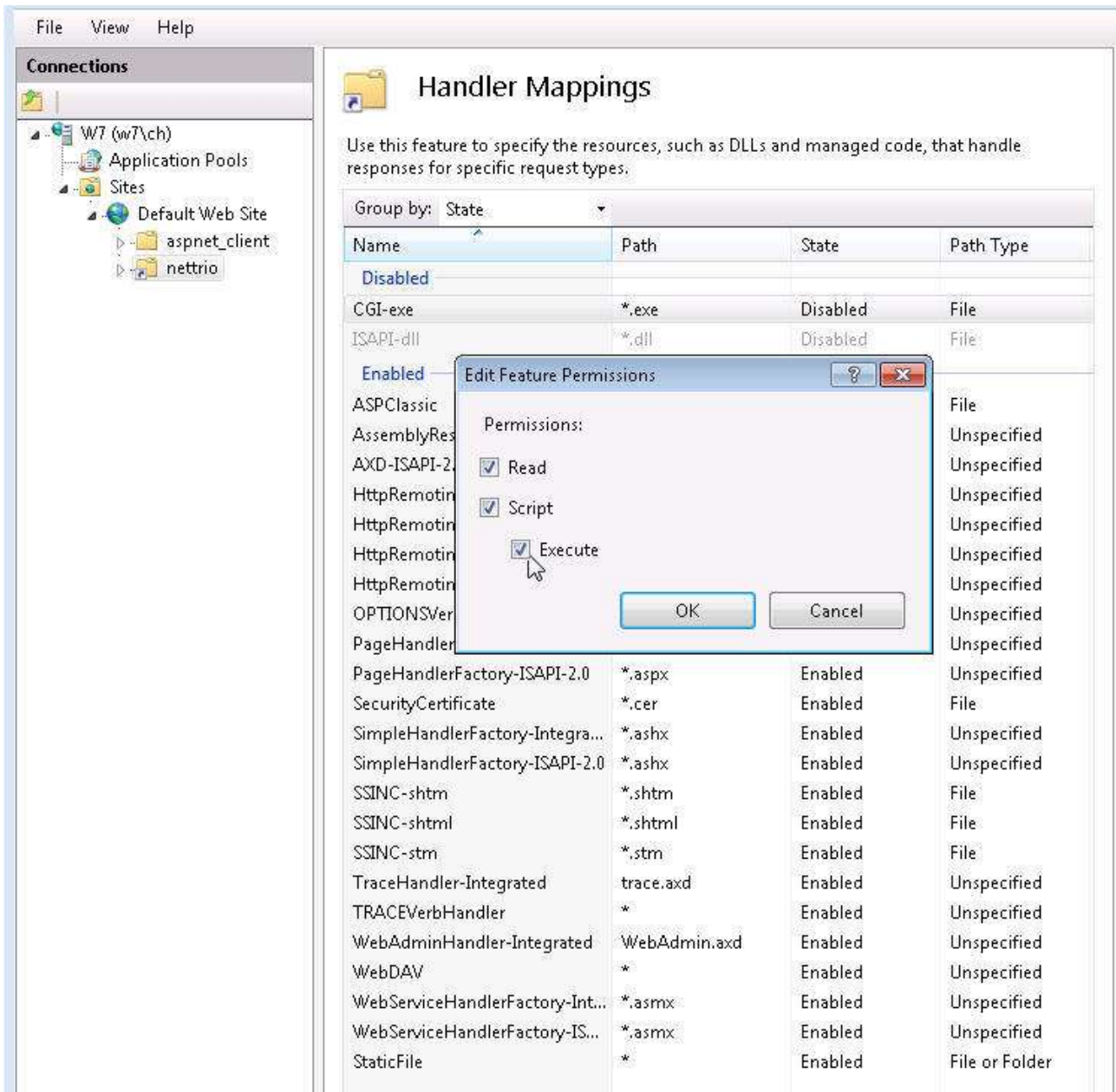
41. IIS

as you must allow the 'Handler mappings' for the website itself too:



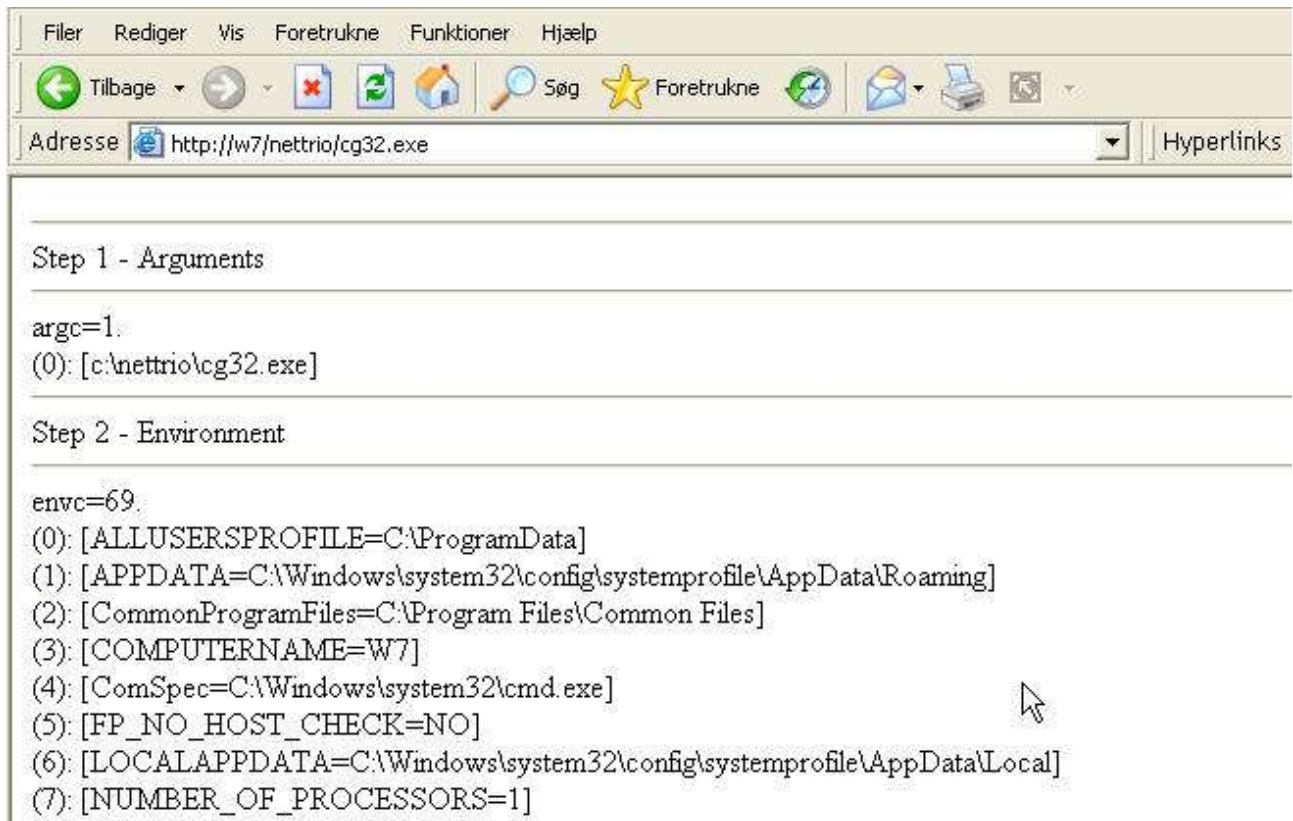
42. IIS

for the CGI-EXE you must check the Execute box:



43. IIS

and the testprogram will show:



44. IIS

Figure list

1. NET-TRIO environment.....	4
2. Product selection	18
3. Installation path	19
4. Program group	20
5. Summary of installation.....	21
6. Super user password.....	21
7. Minimal program group content	22
8. Sample NET-TRIO license	23
9. User linked to existing TRIO installation.....	27
10. Standard preference.....	28
11. PWS - Adding NETTRIO virtual directory	38
12. PWS - Adding PUB virtual directory	39
13. PWS - Adding TMP virtual directory	40
14. PWS - Resulting list of virtual directories.....	41
15. IIS - Adding NETTRIO virtual directory	42
16. IIS - Virtual directory wizard step 1.....	43
17. IIS - Virtual directory wizard step 2.....	43
18. IIS - Virtual directory wizard step 3.....	44
19. IIS - Resulting list of the Default Web Site	45
20. IIS - Standard startup page in browser.....	47
21. NET-RG Subsystem Selector.....	50
22. NET-RG Report Selector.....	51
23. NET-RG Report Start	52
24. Direct start of a report.....	56
25. Setting up a windows printer.....	60
26. NET-PS Plugin Service icon in the taskbar area	62
27. NET-PS Plugin Service window.....	62
28. NET-IQ Subsystem Selector	67
29. NET-IQ Program Selector.....	68
30. NET-IQ Program 5 started.....	69
31. Direct start of a query	72
32. The sample NET-IQ HTML page.....	73
33. IIS	99
34. IIS	100
35. IIS	100
36. IIS	101
37. IIS	102
38. IIS	103
39. IIS	104
40. IIS	105
41. IIS	105
42. IIS	106
43. IIS	107
44. IIS	108

Index

C

CGI.... 5;14;59;89;90;91;101;102;103;105

D

DATAMASTER..... 4;10;61;76;86

Directory41

DMREPORT50

DMSYSTEM49;66

Download16;63

E

Error.....62

F

Firewall 86;100

G

Group59

H

HTML

4;5;6;7;24;30;32;46;47;49;50;51;52;53;
55;56;58;59;60;66;67;68;69;70;71;72;
77;78;81;88;91;108

I

IIS

41;42;43;44;46;84;97;98;99;100;101;1
02;103;104;105;106;107;108

INPUT53;54

IP 28;62;69;87

IQREPORT67

J

JAVA..... 4

JAVASCRIPT 30;32;77;79;80

L

License.....22

Logo78

M

Menu75

N

NETTRIO17;25;37;41;108

O

OBJECT 69;70;72

P

PDF5;6;58;59

plugin 9;47;60;61;63;64;69;70;75;87

portnumber29;69

preference 27;108

Printer..... 6;52;57;59

pub.....30;32;35;37;43;80;90

public.....14;30;32;35;78;79;81

PWS..... 37;38;39;40;43;108

R

RAPGEN 4;5

Report

.....47;48;49;50;51;52;53;55;65;69;108

Router..... 87

S

SCRIPT..... 30

Selector49;50;66;67;108

Service..... 9;29;46;61;62;69;86;108

Subsystem . 48;49;52;65;66;69;94;95;108

Super..... 20;108

SWNET.....63;80

T

tmp14;33;36;37;43;80;90

TrioStuck..... 71

TrioSystem 52;53;71

U

UNIX..... 14

URL 27;28;30;31;32;33;70;96

V

Virtual..... 30;31;32;33;41;42;43;108

W

Webserver30;37